

SYRINGES

HOW TO CHOOSE A SYRINGE

Volume Capacity

Choose a syringe that can hold the volume of liquid you need to dispense.

Type of Material

- Plastic- Lightweight, disposable
- Glass- Durable, sterilizable
- Metal- Used for special applications

Accuracy & Precision

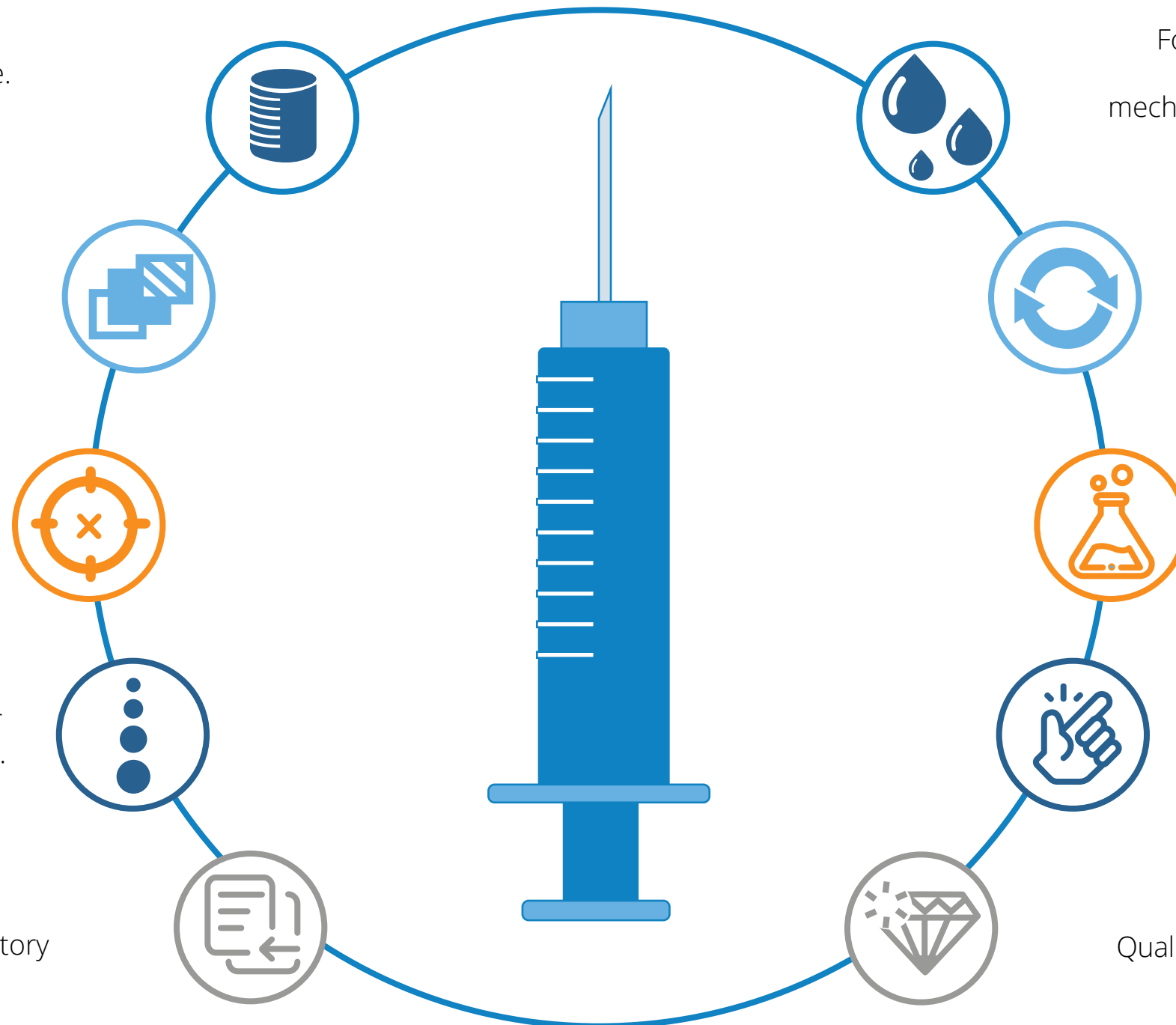
For applications requiring high accuracy and precision, choose a gas-tight syringe with low dead-volume.

Needle Compatability

Needle size should be appropriate for the viscosity and volume of the media.

Application

Medical applications, research, laboratory work, and industrial processes have specific syringe requirements.



Viscosity

For highly viscous liquids, choose a syringe with a larger diameter, heavy plunger mechanism, and larger inner-diameter needle.

Disposable vs. Reusable

- Disposable- One time use
- Reusable- Sterilizable

Chemical Compatability

Reactive chemicals or solvents may require a glass syringe.

Ease-of-Use

Look for syringes with comfortable grips and smooth plunger movement.

Brand and Quality

Quality syringes are less likely to leak, break, or provide inaccurate measurements.