



Eagle™ Pipetters



World Precision Instruments, Inc.

USA

International Trade Center, 175 Sarasota Center Blvd., Sarasota FL 34240-9258
Tel: 941-371-1003 • Fax: 941-377-5428 • E-mail: sales@wpiinc.com

UK

Astonbury Farm Business Centre • Aston, Stevenage, Hertfordshire SG2 7EG
Tel: 01438-880025 • Fax: 01438-880026 • E-mail: wpiuk@wpi-europe.com

Germany

Liegnitzer Str. 15, D-10999 Berlin
Tel: 030-6188845 • Fax: 030-6188670 • E-mail: wpide@wpi-europe.com

China

Rm 20A, No. 8 Dong Fang Lu, Lu Jia Zui Financial District, Shanghai, P.R.China 200120
Tel: +86 21 68885517 • E-mail: chinasales@china.wpiinc.com

Internet

www.wpiinc.com • www.wpi-medical.com
www.nitricoxide.net • www.pipetter.com

www.wpiinc.com

ASSEMBLY VIEWS & REPLACEABLE PARTS

082208

Warranty

WPI (World Precision Instruments, Inc.) warrants to the original purchaser that this equipment, including its components and parts, shall be free from defects in material and workmanship for a period of one year from the date of receipt. WPI's obligation under this warranty shall be limited to repair or replacement, at WPI's option, of the equipment or defective components or parts upon receipt thereof f.o.b. WPI, Sarasota, Florida U.S.A. Return of a repaired instrument shall be f.o.b. Sarasota.

The above warranty is contingent upon normal usage and does not cover products which have been modified without WPI's approval or which have been subjected to unusual physical or electrical stress or on which the original identification marks have been removed or altered. The above warranty will not apply if adjustment, repair or parts replacement is required because of accident, neglect, misuse, failure of electric power, air conditioning, humidity control, or causes other than normal and ordinary usage.

To the extent that any of its equipment is furnished by a manufacturer other than WPI, the foregoing warranty shall be applicable only to the extent of the warranty furnished by such other manufacturer. This warranty will not apply to appearance terms, such as knobs, handles, dials or the like.

WPI makes no warranty of any kind, express or implied or statutory, including without limitation any warranties of merchantability and/or fitness for a particular purpose. WPI shall not be liable for any damages, whether direct, indirect, special or consequential arising from a failure of this product to operate in the manner desired by the user. WPI shall not be liable for any damage to data or property that may be caused directly or indirectly by use of this product.

Claims and Returns

- Inspect all shipments upon receipt. Missing cartons or obvious damage to cartons should be noted on the delivery receipt before signing. Concealed loss or damage should be reported at once to the carrier and an inspection requested. All claims for shortage or damage must be made within 10 days after receipt of shipment. Claims for lost shipments must be made within 30 days of invoice or other notification of shipment. Please save damaged or pilfered cartons until claim settles. In some instances, photographic documentation may be required. Some items are time sensitive; WPI assumes no extended warranty or any liability for use beyond the date specified on the container.
- WPI cannot be held responsible for items damaged in shipment en route to us. Please enclose merchandise in its original shipping container to avoid damage from handling. We recommend that you insure merchandise when shipping. The customer is responsible for paying shipping expenses including adequate insurance on all items returned.
- Do not return any goods to WPI without obtaining prior approval and instructions (RMA#) from our returns department. Goods returned unauthorized or by collect freight may be refused. The RMA# must be clearly displayed on the outside of the box, or the package will not be accepted. Please contact the RMA department for a request form.
- Goods returned for repair must be reasonably clean and free of hazardous materials.
- A handling fee is charged for goods returned for exchange or credit. This fee may add up to 25% of the sale price depending on the condition of the item. Goods ordered in error are also subject to the handling fee.
- Equipment which was built as a special order cannot be returned.
- Always refer to the RMA# when contacting WPI to obtain a status of your returned item.
- For any other issues regarding a claim or return, please contact the RMA department.

Warning: This equipment is not designed or intended for use on humans.

Copyright © 2008 by World Precision Instruments, Inc. All rights reserved. No part of this publication may be reproduced or translated into any language, in any form, without prior written permission of World Precision Instruments, Inc.

Universal Tips

Tip Volume	For Pipetter	Bulk	Part No.	Rack	Part No.
0.1 - 10 µL	Eagle E2 Eagle E10 Eagle E20	Bag of 1000	500191	960 (10 racks of 96)	500192
5 - 200 µL	Eagle E20 Eagle E100 Eagle E200	Bag of 1000	500193	960 (10 racks of 96)	500194
100 - 1000 µL	Eagle E1000	Bag of 1000	500195	1000 (10 racks of 100)	500196
500 - 5000 µL	Eagle E5000	Bag of 250	500197 *	500 (10 racks of 50)	500198 *

Universal Filter Tips (sterile)

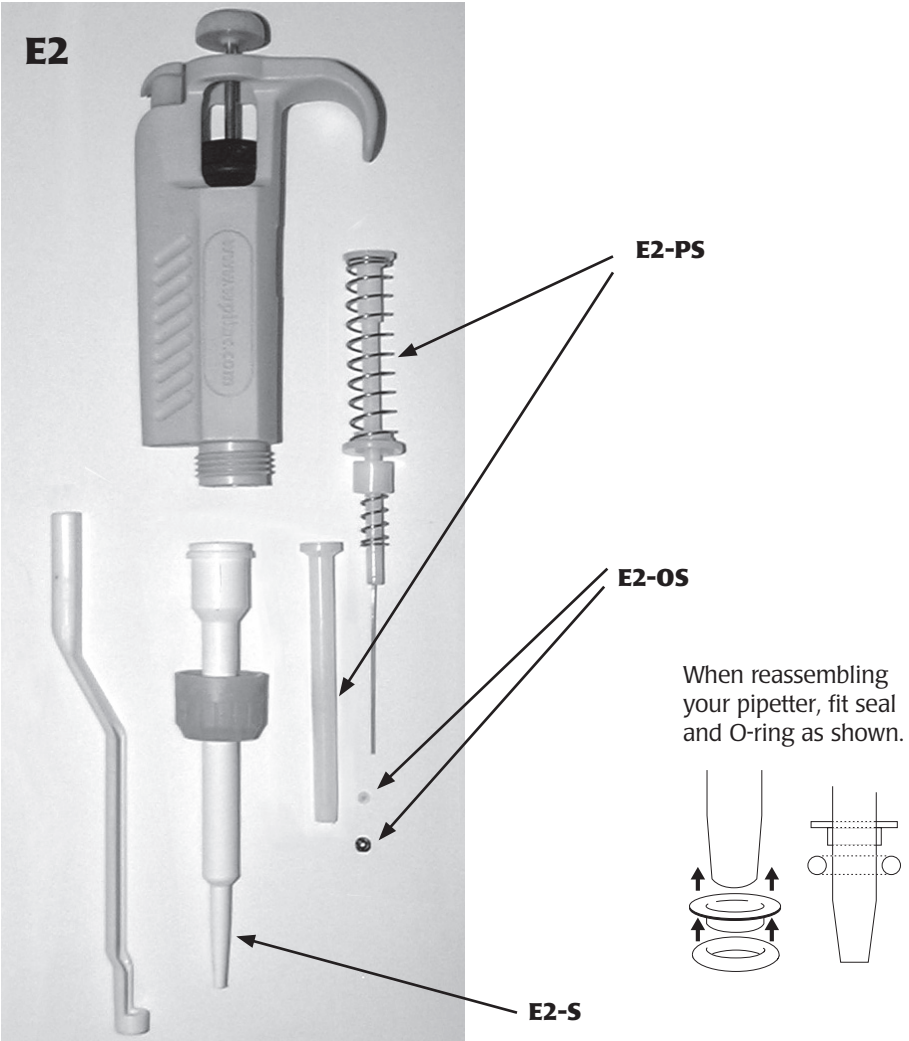
Tip Volume	For Pipetter	Bulk	Part No.	Rack	Part No.
0.1 - 10 µL	Eagle E2 Eagle E10 Eagle E20			960 (10 racks of 96)	500199
10 - 200 µL	Eagle E20 Eagle E100 Eagle E200			960 (10 racks of 96)	500200
100 - 1000 µL	Eagle E1000			1000 (10 racks of 100)	500201

Universal Gel Loader Tips (flexible)

Tip Volume	For Pipetter	Bulk	Part No.	Rack	Part No.
0.1 - 10 µL (Flat) 0.17 mm OD	Eagle E2 Eagle E10 Eagle E20			200	500202
0.1 - 10 µL (Flat) 0.37 mm OD	Eagle E2 Eagle E10 Eagle E20			200	500203
0.1 - 10 µL (Round) 0.57 mm OD	Eagle E2 Eagle E10 Eagle E20			200	500204
0.5 - 200 µL (Round) 0.57 mm OD	Eagle E20 Eagle E100 Eagle E200	Bag of 1000	500205	200	500206
0.5 - 200 µL (Flat) 0.37 mm OD	Eagle E20 Eagle E100 Eagle E200			200	500207

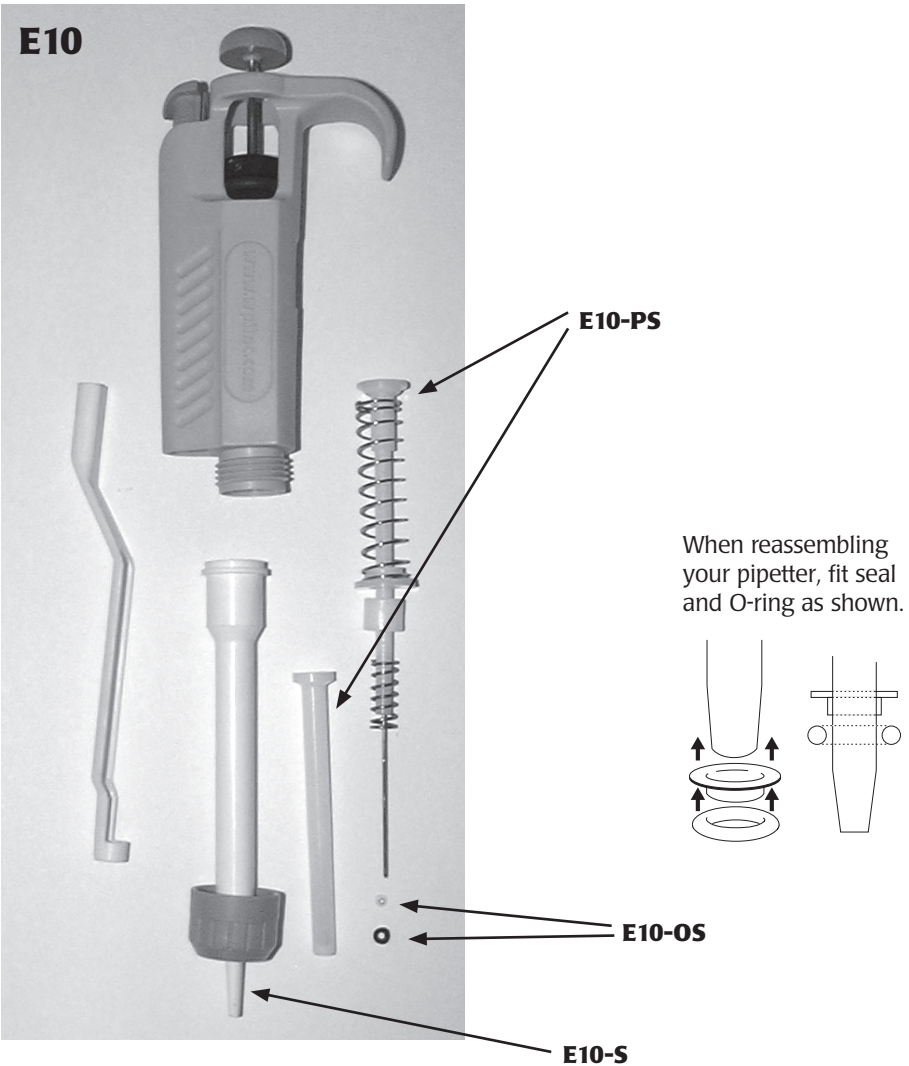
WPI's Universal Pipette Tips are for use with Eagle and most other pipettors, including Gilson, Oxford Benchmate, Socorex, and SealPette.

* Tips 500197 and 500198 fit Eagle, Eppendorf, and BioHit pipettors.



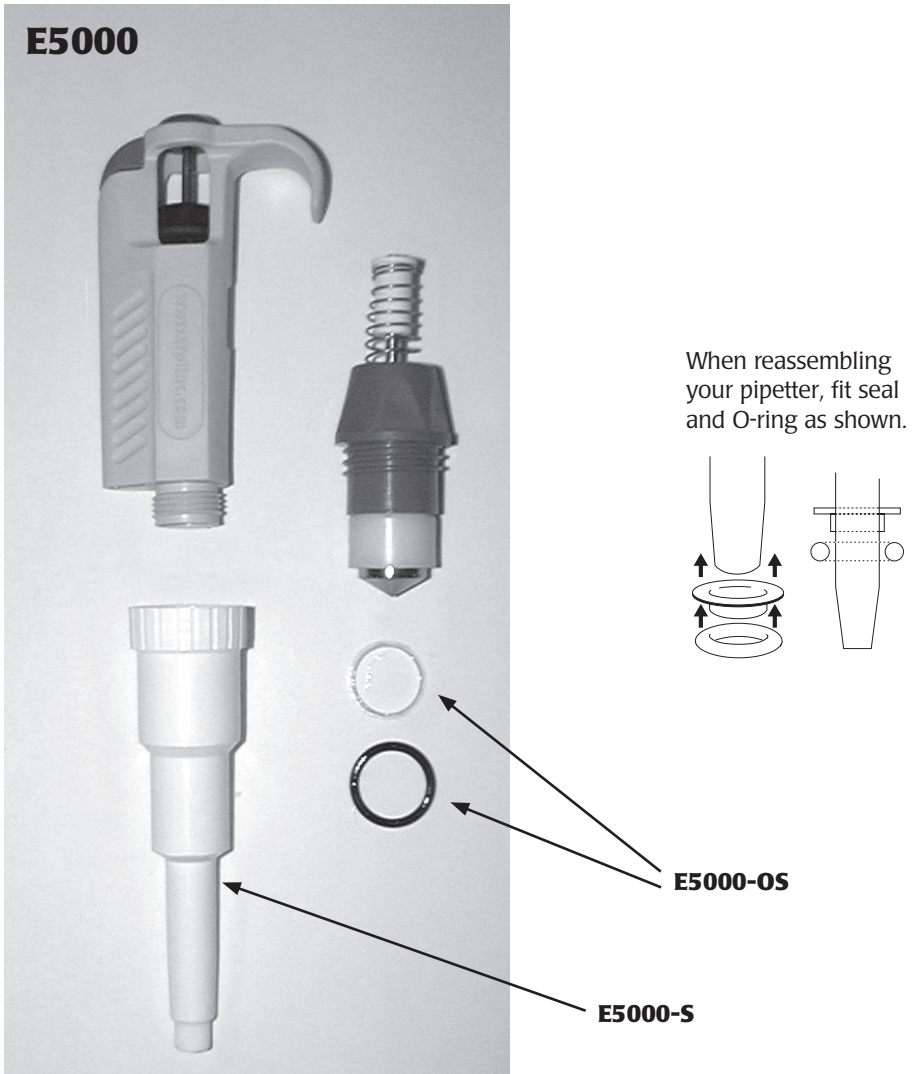
WPI #	Description
E2	Eagle Pipetter 0.2-2 µL
E2-OS	O-Ring & Seal For E2
E2-PS	Stainless Steel Piston E2
E2-S	Pipetter Shaft For E2 (locking ring not included)

Only those components listed here are available. If your instrument has a damaged or missing part not listed above, you will have to replace the entire instrument.



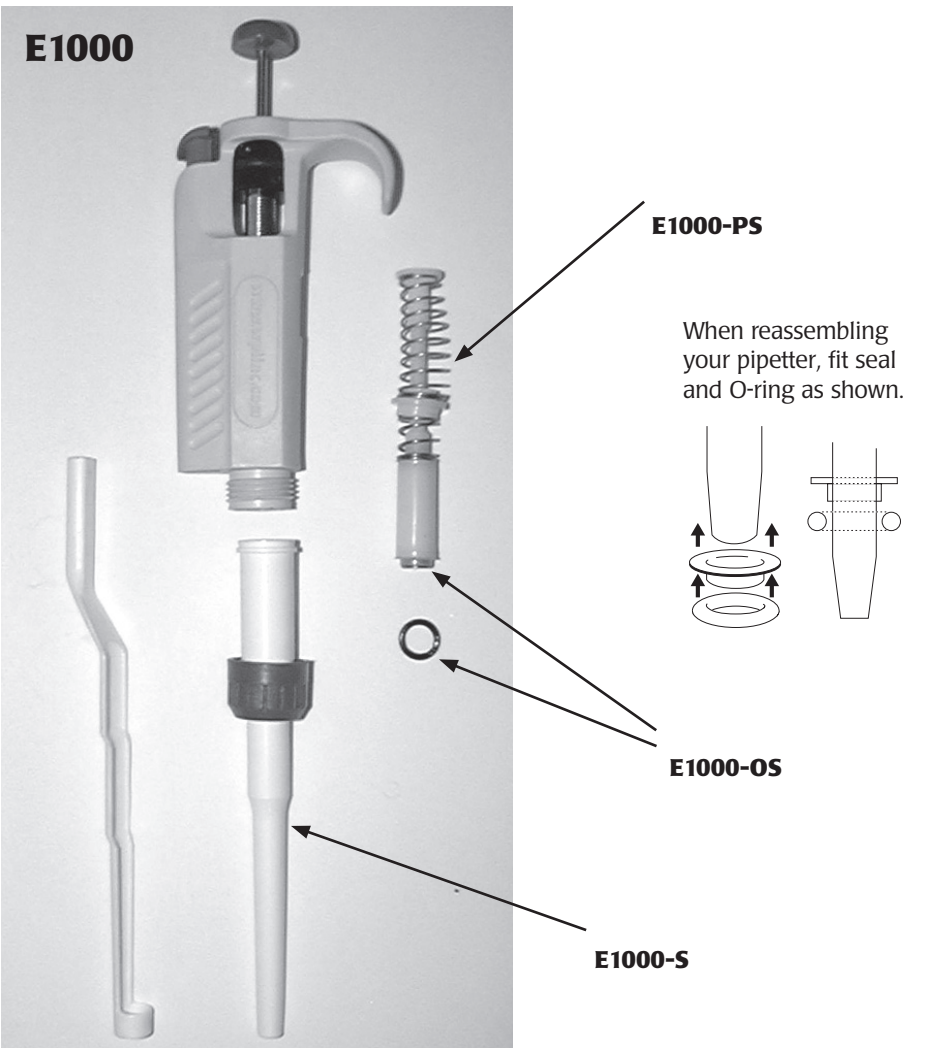
WPI #	Description
E10	Eagle Pipetter 0.5-10 µL
E10-OS	O-Ring & Seal for E10
E10-PS	Stainless Steel Piston for E10 (including E10-OS O-ring & seal)
E10-S	Pipetter Shaft for E10 (locking ring not included)

Only those components listed here are available. If your instrument has a damaged or missing part not listed above, you will have to replace the entire instrument.



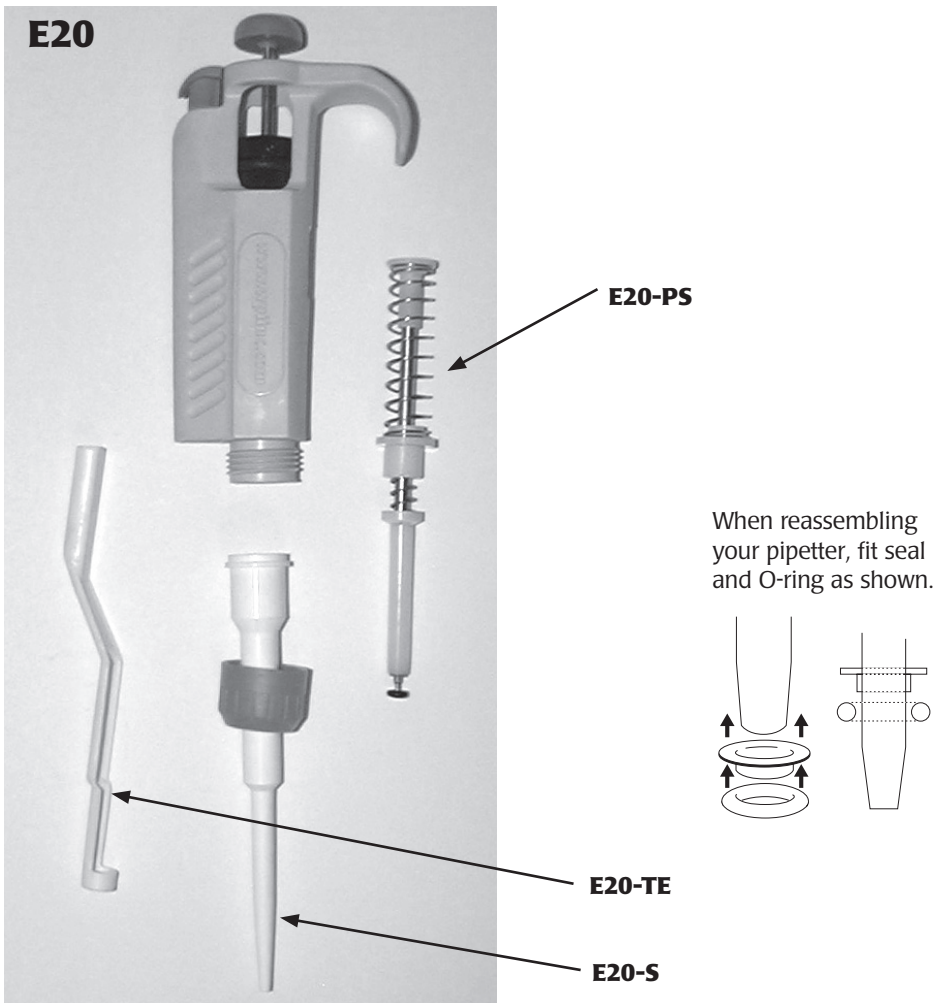
WPI #	Description
E5000	Eagle Pipetter 1000-5000 µL
E5000-OS	O-Ring & Seal For E5000
E5000-S	Pipetter Shaft For E5000

Only those components listed here are available. If your instrument has a damaged or missing part not listed above, you will have to replace the entire instrument.



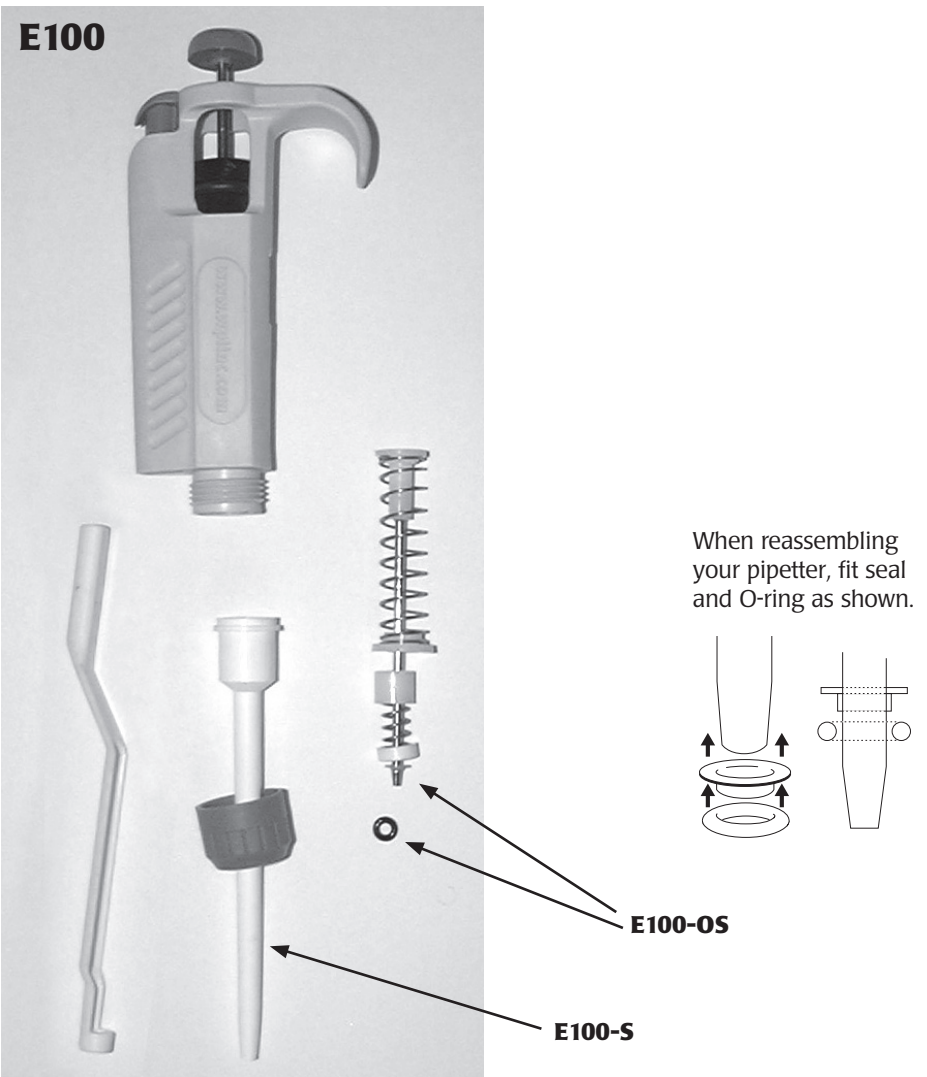
WPI #	Description
E1000	Eagle Pipetter 100-1000 µL
E1000-OS	O-Ring & Seal For E1000
E1000-PS	Stainless Steel Piston E1000 (including E1000-OS O-ring & seal)
E1000-S	Pipetter Shaft For E1000 (locking ring not included)

Only those components listed here are available. If your instrument has a damaged or missing part not listed above, you will have to replace the entire instrument.



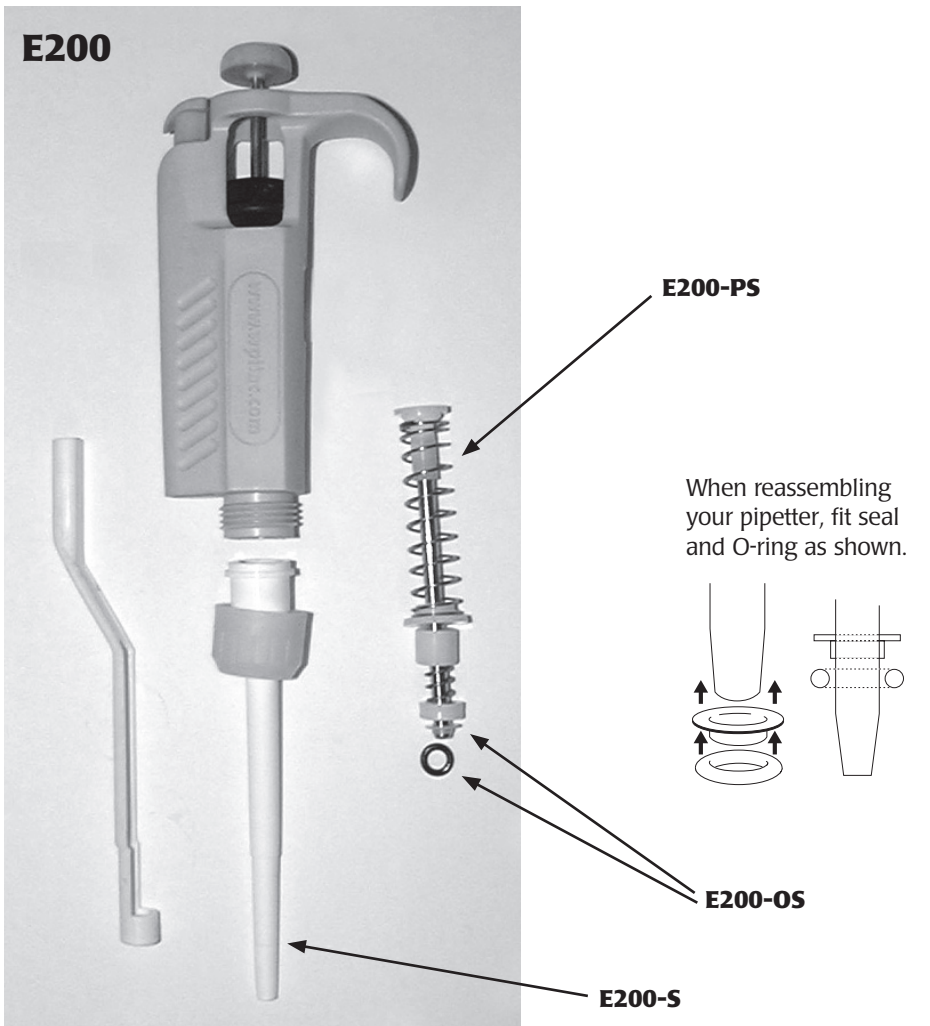
WPI #	Description
E20	Eagle Pipetter 2-20 µL
E20-OS	O-Ring & Seal For E20
E20-PS	Stainless Steel Piston E20 (including E20-OS O-ring & seal)
E20-S	Pipetter Shaft For E20 (locking ring not included)
E20-TE	Pipetter Tip Ejector For E20

Only those components listed here are available. If your instrument has a damaged or missing part not listed above, you will have to replace the entire instrument.



WPI #	Description
E100	Eagle Pipetter 20-100 µL
E100-OS	O-Ring & Seal For E100
E100-S	Pipetter Shaft For E100 (locking ring not included)

Only those components listed here are available. If your instrument has a damaged or missing part not listed above, you will have to replace the entire instrument.



WPI #	Description
E200	Eagle Pipetter 50-200 µL
E200-OS	O-Ring & Seal For E200
E200-PS	Stainless Steel Piston E200 (including E200-OS O-ring & seal)
E200-S	Pipetter Shaft For E200 (locking ring not included)

Only those components listed here are available. If your instrument has a damaged or missing part not listed above, you will have to replace the entire instrument.