



WORLD
PRECISION
INSTRUMENTS

2022

PRECISION

LABORATORY SOLUTIONS

Laboratory equipment for life science research



www.wpi-europe.com

MICROSCOPES • MICROMANIPULATORS • CENTRIFUGES • PULLERS • BEVELERS • HOTPLATES • ANIMAL SURGERY EQUIPMENT
• ANIMAL RESEARCH PRODUCTS

ABOUT WORLD PRECISION INSTRUMENTS

For 50+ years, we have proudly served the biomedical and scientific community as a family-owned and operated company. The company, founded in 1965, is a leading global provider of research equipment and laboratory supplies. Our comprehensive product line is offered through a network of distributors and is intended for use in markets like these:

Academia • Research • Biotechnology • Pharmaceutical • Manufacturing • Industrial • Clinical • Veterinary • Specialty Markets

Consider WPI as your go-to source for equipment, surgical instruments and supplies for your research laboratory. WPI offers cost-effective, high quality research instruments for life science researchers, as indicated by tens of 1000s of citations in noteworthy publications.



WHY CHOOSE WPI?

- Service Longevity** WPI has been in business for over 50 years.
- Satisfaction** We stand by the quality of our products and services.
- Selection** We offer high-quality products in stock and ready to ship at reasonable prices.
- Support** We have a strong support structure in place for both our employees and customers.
- Stability** WPI is well-known in the biomedical and scientific community as an established company with continued growth.

100% SATISFACTION GUARANTEE ON SURGICAL INSTRUMENTS

We stand behind the quality of our products to ensure you are satisfied. For example, if you are not 100% satisfied with your surgical instrument purchase, we offer a full refund within 30 days of purchase with no restocking fee. Our electronic equipment comes with a one year warranty. Extended warranties are also available on some units.



CERTIFICATIONS

WPI Sarasota is an ISO-9001:2015 certified organization and a US Food and Drug Administration registered "Medical Device" facility (FDA). WPI uses Authorize.net as our payment gateway. Our sales and product specialists have received specialized training and are happy to help you.



(866) 606-1974 • wpi@wpiinc.com

WORLD PRECISION INSTRUMENTS

UK: www.wpi-europe.com Germany: www.wpi-europe.com China: www.wpiinc.net



Let WPI be your source for all your lab supplies. With over 5,000 products that we manufacture and source, we offer quality, cost-effective instruments for wherever science takes you.

TABLE OF CONTENTS

ADHESIVES.....	1
GLASS CAPILLARIES	2
PRE-PULLED MICROPIPETTES	3
MICROPIPETTE HOLDERS AND HALF CELLS	4
NANOFIL™ MICROLITER SYRINGE.....	6
FLUORODISH™ CELL CULTURES DISHES	7
LAB & SURGICAL TOOLS.....	9
MICROINJECTORS	10
PERISTALTIC PUMPS.....	10
PNEUMATIC MICROINJECTORS.....	10
SYRINGE PUMPS	10
OTHER LAB SUPPLIES	11

ADHESIVES

The adhesive you select will be heavily influenced by your application. Use the table below to help you choose the best glue for your life science research project.



SILICONE (Adhesive/Sealants/Primers) Good moisture resistance and elasticity. Low toxicity.

Part No.	Description	Curing Time	Useful Applications and Characteristics
1571	Room temperature vulcanizing (RTV) adhesive. Acyloxy/moisture cure system. Acetic acid is a curing by-product.	24hrs@25C	Has the best adhesion property in this silicone family. Will bond to many materials.
7128	RTV sealant. Alkoxy/Moisture cure system. Methanol is a curing by-product.	72hrs@25C	Good for bonding or sealing electronics circuits (metal).
SYLG184	Sylgard, Two parts, vinyl/platinum cure sealant. Hydrogen is a curing by-product. Very low toxicity.	24hrs@25C, 15 min.@150C	Coating patch clamp electrodes, cell culture dish, making dissection pads.
Kwik-Sil	Two part, adhesive. Vinyl/platinum system, Hydrogen is a curing by-product. Very low toxicity.	< 5 min@25C	Live tissue and nerve studies. Medium strength adhesion.
Kwik-Cast	Two part sealant. Vinyl/platinum cure system. Hydrogen is a curing by-product. Very low toxicity.	< 5 min@25C	Sealant for live tissues. Embedding peripheral nerves with electrodes.
6820	Primer for silicone.	N/A	Enhances adhesion of silicone adhesives for difficult to bond plastic surfaces.

CYANOACRYLATE Forms an instantaneous bonding.

7341	Ethyl Cyanoacrylate, low viscosity 90-120 cps	<10 seconds	Mounting rat/mouse brain slices. Ideal for relatively small gaps and smooth surfaces. Bonds plastic, metals and rubber. Package of 10 vials, each approximately 1.5 mL.
7342	Ethyl Cyanoacrylate, high viscosity 1100-1600 cps	<30 seconds	Use on brain slice. Ideal for larger gaps, allows slightly longer bonding time. Bonds plastic, metals and rubber. Package of 10 vials, each approximately 1.5 mL.
Vetbond	Butyl Cyanoacrylate, low toxicity	<10 seconds	Bonds tissues, alternative to suture, helps small wound healing. Antimicrobial effect. Used in forensic science.
503763	Octyl Cyanoacrylate, low toxicity	<15 seconds	Suitable for surface wound bonding, protection, holding a sensor or other device on the tissue.

EPOXIES Form strong bonding. Used in wire bonding applications.

4898	Silver filled conductive Epoxy	12 hrs@50C; 5 min @150C	Connecting conductors that can't be soldered. Constructing or connecting Ag/AgCl pellets.
7335	Carbon filled conductive Epoxy	48 hrs@25C; 5 min @150C	Constructing carbon electrode.
4886	High performance structural epoxy	12 hrs@25C.	Forms a strong and slightly flexible bond on plastic, metal, and glass. Bonds some low surface.
503763	Octyl Cyanoacrylate, Low toxicity	<15 seconds	Suitable for surface wound bonding, protection, holding a sensor or other device on the tissue.

HOT MELT (EVA) Easy to use for bonding, needs large gap filling.

13316	Mini Glue Gun with glue sticks	As soon as it cools down	Bonds wood, glass, metals, and many plastics.
--------------	--------------------------------	--------------------------	---

GLASS CAPILLARIES

- Glass orders ship within 48 hours.
- Standard glass is available with or without a fused filament to the inner wall. Filaments aid in the capillary action that allows electrodes to be filled.
- Capillary glass with multiple barrels is available in two, three, five, and seven-barrel configurations.
- For finer tips and shorter tapers, a range of single barrel thin-wall glass is available.
- Special configurations such as septum theta and piggyback glass capillaries are also available.



Single Barrel Standard Borosilicate Glass

Length ± 1 mm	OD(mm) ± 0.1 mm	ID(mm) ± 0.1 mm	Filament	Fire-Polished	Quantity	Item
3 in. (76 mm)	1.0	0.58	✓		500	1B100F-3
3 in. (76 mm)	1.0	0.58			500	1B100-3
3 in. (76 mm)	1.2	0.68	✓		350	1B120F-3
3 in. (76 mm)	1.2	0.68			350	1B120-3
3 in. (76 mm)	1.5	0.84	✓		225	1B150F-3
3 in. (76 mm)	1.5	0.84		✓	300	1B150-3
4 in. (100 mm)	1.0	0.58	✓	✓	500	1B100F-4
4 in. (100 mm)	1.0	0.58		✓	500	1B100-4
4 in. (100 mm)	1.2	0.68	✓	✓	400	1B120F-4
4 in. (100 mm)	1.2	0.68		✓	350	1B120-4
4 in. (100 mm)	1.5	0.84	✓	✓	300	1B150F-4
4 in. (100 mm)	1.5	0.84		✓	300	1B150-4
4 in. (100 mm)	2.0	1.12	✓		125	1B200F-4
4 in. (100 mm)	2.0	1.12		✓	200	1B200-4
6 in. (152 mm)	1.0	0.58	✓		500	1B100F-6
6 in. (152 mm)	1.0	0.58			500	1B100-6
6 in. (152 mm)	1.2	0.68	✓		350	1B120F-6
6 in. (152 mm)	1.2	0.68			350	1B120-6
6 in. (152 mm)	1.5	0.84	✓		225	1B150F-6
6 in. (152 mm)	1.5	0.84			225	1B150-6
6 in. (152 mm)	2.0	1.12	✓		125	1B200F-6
6 in. (152 mm)	2.0	1.12			125	1B200-6

Thin-Wall Single Barrel Standard

3 in. (76 mm)	1.0	0.75	✓		500	TW100F-3
3 in. (76 mm)	1.0	0.75			500	TW100-3
3 in. (76 mm)	1.2	0.90	✓	✓	400	TW120F-3
3 in. (76 mm)	1.2	0.90			350	TW120-3
3 in. (76 mm)	1.5	1.12	✓		225	TW150F-3
3 in. (76 mm)	1.5	1.12		✓	300	TW150-3
4 in. (100 mm)	1.0	0.75	✓		500	TW100F-4
4 in. (100 mm)	1.0	0.75		✓	500	TW100-4
4 in. (100 mm)	1.2	0.90	✓		350	TW120F-4
4 in. (100 mm)	1.2	0.90			350	TW120-4
4 in. (100 mm)	1.5	1.12	✓		225	TW150F-4
4 in. (100 mm)	1.5	1.12		✓	300	TW150-4
6 in. (152 mm)	1.0	0.75	✓		500	TW100F-6
6 in. (152 mm)	1.0	0.75		✓	500	TW100-6
6 in. (152 mm)	1.2	0.90	✓	✓	400	TW120F-6
6 in. (152 mm)	1.2	0.90			350	TW120-6
6 in. (152 mm)	1.5	1.12	✓		225	TW150F-6
6 in. (152 mm)	1.5	1.12		✓	300	TW150-6

Single barrel glass is Kimble N51A. All thin wall glass is Schott Duran 8330.

77020

Glass Handling Forceps

Multi-Barrel Borosilicate Glass Tubing with Filaments

Length ± 1 mm	Description	OD/ID (per barrel) ± 0.1 mm	Filament	Qty	Item
4" (102mm)	2-Barrel	1.5/0.84 mm	✓	100	2B150F-4
4" (102mm)	3-Barrel	1.2/0.68 mm	✓	100	3B120F-4
4" (102mm)	5-Barrel	1.2/0.68 mm	✓	65	5B120F-4
4" (102mm)	7-Barrel	1.0/0.58 mm	✓	60	7B100F-4
4" (102mm)	7-Barrel	1.2/0.68 mm	✓	75	7B120F-4
6" (152mm)	2-Barrel	1.5/0.84 mm	✓	100	2B150F-6
6" (152mm)	3-Barrel	1.2/0.68 mm	✓	100	3B120F-6
6" (152mm)	5-Barrel	1.2/0.68 mm	✓	65	5B120F-6
6" (152mm)	7-Barrel	1.0/0.58 mm	✓	60	7B100F-6

Borosilicate Glass Rod

Description	OD (mm)	Length	Qty	Item
Glass Rod	1.0	4 in. (102mm)	500	GR100-4
Glass Rod	1.0	6 in. (152mm)	500	GR100-6

Patch Clamp Capillary Glass

Catalog#	Glass Type	OD/ID (mm)	Dielectric Constant	Softening Point °C	QTY
PG52151-4	#8250	1.5/1.0	4.9	720°	100
PG52165-4	#8250	1.65/1.1	4.9	720°	100
PG10150-4	#0010	1.5/0.75	6.7	625°	100
PG10165-4	#0010	1.65/1.1	6.7	625°	100

Special Configuration Borosilicate Glass Tubing

Description	OD/ID (mm) ± 0.1 mm	Length ± 1 mm	Qty	Item
Septum Theta	1.5/1.02	6 in. (152 mm)	100	TST150-6
Piggyback	1.51/0.84 0.75/0.35	4 in. (102 mm)	50	PB150F-4
Piggyback	1.51/0.84 0.75/0.35	6 in. (152 mm)	50	PB150F-6

WORLD PRECISION INSTRUMENTS

www.wpiinc.com

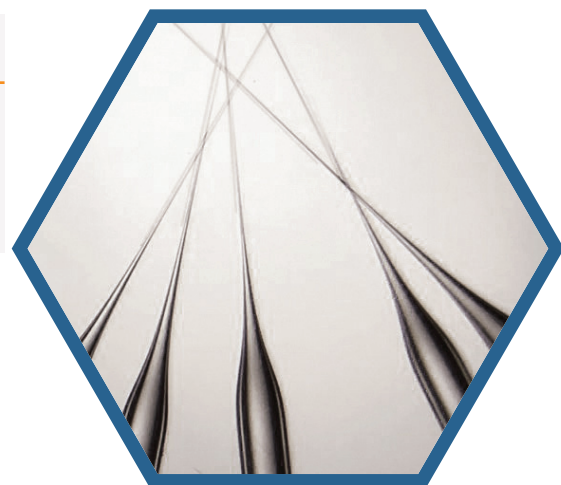
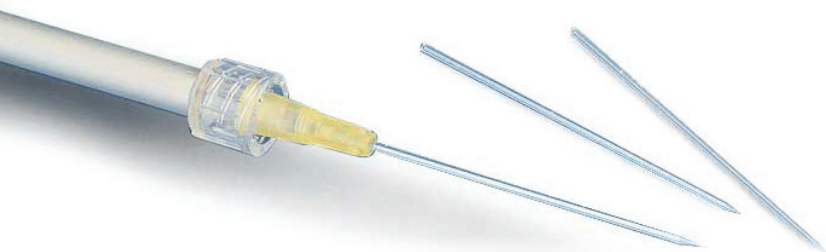
ORDER TOLL-FREE: (866) 606-1974 (U.S. only) • Tel: (941) 371-1003 • Fax: (941) 377-5428 • E-mail: wpi@wpiinc.com

PRE-PULLED MICROPIPETTES

Avoid the expense and hassle of making your own micropipettes. Get consistently sized pre-pulled glass micropipettes for injection of dyes or proteins into cells, oocytes, and a variety of other biomedical laboratory applications. The diameters of the tips (ID) range from 0.1 to 10µm.

DID YOU KNOW?

Silanization waterproofs the glass, allowing it to withstand water when inserted into a cell. This prevents the outside fluid from flowing down the pipette and entering the pipette.



Order Code	Shank	Tip I.D.	Shank Length	Glass O.D.	Filament	Fire Polished
TIP01TW1F	Plain	0.1µm	—	1.0 mm Thin-Wall	Yes	No
TIP02TW1F	Plain	0.2 µm	—	1.0 mm Thin-Wall	Yes	No
TIP03TW1F	Plain	0.3 µm	—	1.0 mm Thin-Wall	Yes	No
TIP04TW1F	Plain	0.4 µm	—	1.0 mm Thin-Wall	Yes	No
TIP05TW1F	Plain	0.5 µm	—	1.0 mm Thin-Wall	Yes	No
TIP1TW1	Plain	1 µm	—	1.0 mm Thin-Wall	No	Yes
TIP2TW1	Plain	2 µm	—	1.0 mm Thin-Wall	No	Yes
TIP5TW1	Plain	5 µm	—	1.0 mm Thin-Wall	No	Yes
TIP10TW1	Plain	10 µm	—	1.0 mm Thin-Wall	No	Yes
TIP10XV119	Plain	10 µm	—	1.14 mm A203XV glass *	No	Yes
TIP30TW1	Plain	30 µm	—	1.0 mm Thin-Wall	No	Yes
TIP01TW1F-L	Luer	0.1µm	—	1.0 mm Thin-Wall	Yes	—

Order Code	Shank	Tip I.D.	Shank Length	Glass O.D.	Filament	Fire Polished
TIP02TW1F-L	Luer	0.2µm	—	1.0 mm Thin-Wall	Yes	—
TIP05TW1F-L	Luer	0.5µm	—	1.0 mm Thin-Wall	Yes	—
TIP1TW1-L	Luer	1µm	—	1.0 mm Thin-Wall	No	—
TIP2TW1-L	Luer	2µm	—	1.0 mm Thin-Wall	No	—
TIP5TW1-L	Luer	5µm	—	1.0 mm Thin-Wall	No	—
TIP10TW1-L	Luer	10µm	—	1.0 mm Thin-Wall	No	—
TIP30TW1-L	Luer	30µm	—	1.0 mm Thin-Wall	No	—
TIP5TW1LS01	Luer/ Silanized	5µm	1 inch	1.0 mm Thin-Wall	No	—
TIP5TW1LS02	Luer/ Silanized	5µm	2 inch	1.0 mm Thin-Wall	No	—
TIP10TW1LS01	Luer/ Silanized	10µm	1 inch	1.0 mm Thin-Wall	No	—
TIP10TW1LS02	Luer/ Silanized	10µm	2 inch	1.0 mm Thin-Wall	No	—
TIP30TW1LS01	Luer/ Silanized	30µm	1 inch	1.0 mm Thin-Wall	No	—
TIP30TW1LS02	Luer/ Silanized	30µm	2 inch	1.0 mm Thin-Wall	No	—

MICROPIPETTE HOLDERS AND HALF CELLS

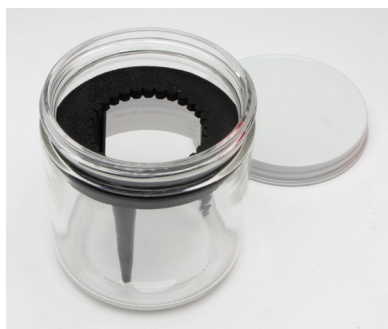
Microelectrode holder-half-cells from WPI connect fluid-filled glass micropipettes to high input impedance amplifiers. Stable potential is provided by an Ag/AgCl pellet (or silver wire) molded into the holder body. Male 2mm pins or female 2mm sockets are used to make electrical connections. The pipette can be positioned either axially or at right angles to the holder.

When WPI microelectrode holders are filled with chloride-containing electrolytes, the electrode potential remains stable. Electrolytes that are appropriate include KCl, NaCl, and CaCl_2 . Holders are provided for standard WPI single glass capillary tubing with outside diameters of 1.0, 1.2, 1.5, and 2.0mm.



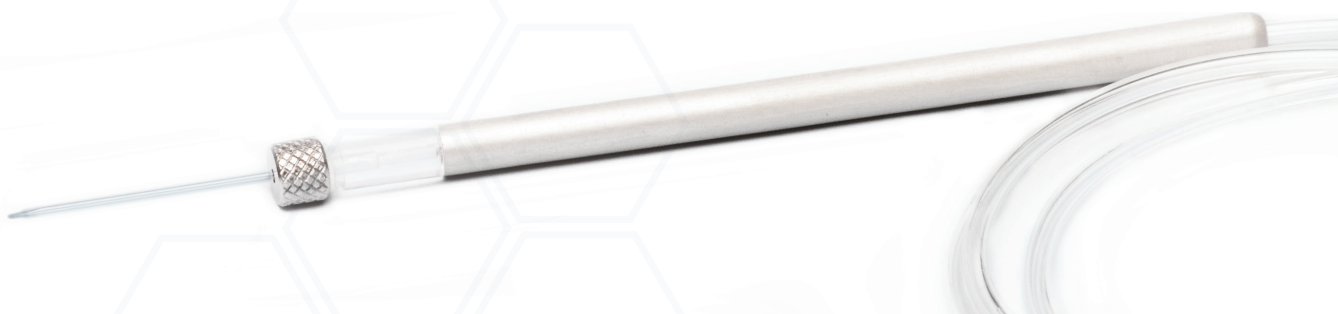
CHOOSING MICROPIPETTE HOLDERS

- Determine the electrical connection needed on the holder. For a 2mm pin connections, choose a 2mm jack holder.
- Determine the electrical connection's required alignment (in-line with the glass pipette or at a right angle to it).
- Will a rubber gasket (for easy insertion/removal of pipette) or screw-cap (secure mounts) hold the glass pipette.
- For the metal/liquid coupling, select a holder with either a silver wire (more durable and easier to use when equipped with a pressure port) or a silver/silver chloride pellet (a more stable, low-noise baseline).
- Only use a holder with a pressure port if you want to pressure inject liquid from the pipette. Choose a 2.0mm O.D. or a standard "syringe-style" luer port, which simplifies assembly and disassembly.
- Some non-WPI pre-amplifiers and headstages are not compatible with micromanipulators and will require a holder with a rod to easily mounted on a micromanipulator.
- Specify the O.D. of the glass you will be using when you order.



SELECT MICROPIPETTES

- MEH6RF/SF is designed primarily for use with the Model 900A Micropressure System.
- EHB1 is for use in electrode beveling.
- MEH3SW is for microtitration of chloride with a silver wire as the electrode and a solution of silver nitrate filling the holder.
- MPH models do not contain Ag/AgCl half-cells and are used for pressure injection of substances through microelectrodes.
- PicoNozzle, used for pressure injection with PV800 Series PicoPumps, includes an MPH6S holder, which may also be used to couple a micropipette to a syringe.

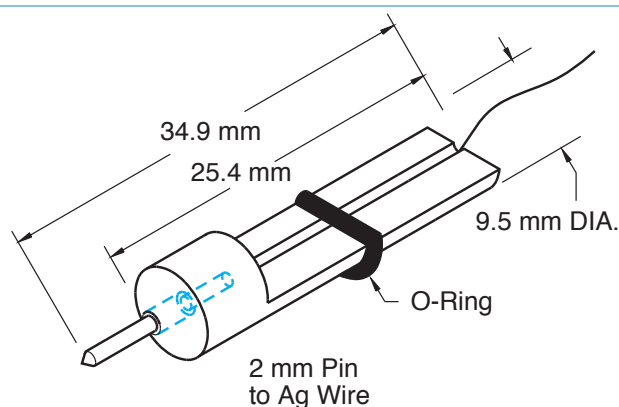
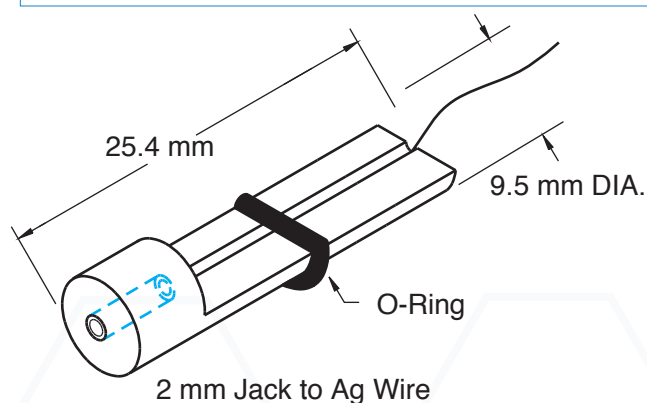


MICROELECTRODE HOLDERS

◆ = custom order (call for price)

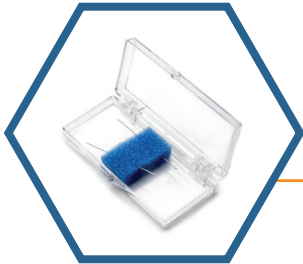
Order Number Replace XX with glass OD *	Custom Order	Electric Connection Angle	Connector	Half-Cell	Pressure Port	Screw Cap	Designed for WPI Products
EHBF		Straight	Female	Wire	No Port	N/A	MBS, 48000
FOIMPH		Straight	Fiber Optic	None	No Port	w/Cap	MBS, 48000
MEH1Sxx		Straight	Male	Pellet	No Port	No Cap	
MEH1SFxx		Straight	Female	Pellet	No Port	No Cap	705, 773, 767, 721, FD223
MEH2Rxx	◆	Right	Male	Pellet	Male Luer	w/Cap	
MEH2RFxx	◆	Right	Female	Pellet	Male Luer	w/Cap	705, 773, 767, 721, FD223
MEH2RFWxx	◆	Right	Female	Wire	Male Luer	w/Cap	705, 773, 767, 721, FD223
MEH2RWxx	◆	Right	Male	Wire	Male Luer	w/Cap	
MEH2Sxx		Straight	Male	Pellet	Male Luer	w/Cap	
MEH2SFxx		Straight	Female	Pellet	Male Luer	w/Cap	705, 773, 767, 721, FD223
MEH2SFWxx	◆	Straight	Female	Wire	Male Luer	w/Cap	705, 773, 767, 721, FD223
MEH2SWxx		Straight	Male	Wire	Male Luer	w/Cap	
MEH345xx		45°	Male	Pellet	No Port	w/Cap	
MEH3F45xx	◆	45°	Female	Pellet	No Port	w/Cap	705, 773, 767, 721, FD223
MEH3FW45xx	◆	45°	Female	Wire	Port	w/Cap	
MEH3Rxx		Right	Male	Pellet	No Port	w/Cap	
MEH3RFxx		Right	Female	Pellet	No Port	w/Cap	705, 773, 767, 721, FD223
MEH3RFWxx	◆	Right	Female	Wire	No Port	w/Cap	705, 773, 767, 721, FD223
MEH3RWxx	◆	Right	Male	Wire	No Port	w/Cap	
MEH3Sxx		Straight	Male	Pellet	No Port	w/Cap	
MEH3SBWxx	◆	Straight	Banana	Wire	No Port	w/Cap	ISO-80, ISO-DAM8A
MEH3SFxx		Straight	Female	Pellet	No Port	w/Cap	705, 773, 767, 721, FD223
MEH3SFWxx		Straight	Female	Wire	No Port	w/Cap	705, 773, 767, 721, FD223
MEH3SWxx		Straight	Male	Wire	No Port	w/Cap	
MEH3W45xx	◆	45°	Male	Wire	No Port	w/Cap	705, 773, 767, 721, FD223
MEH6RFxx		Right	Female	Pellet	2.0-mm Port	w/Cap	705, 773, 767, 721, FD223
MEH6RFWxx	◆	Right	Female	Wire	2.0-mm Port	w/Cap	705, 773, 767, 721, FD223
MEH6SFxx		Straight	Female	Pellet	2.0-mm Port	w/Cap	705, 773, 767, 721, FD223
MEH6SFWxx	◆	Straight	Female	Wire	2.0-mm Port	w/Cap	705, 773, 767, 721, FD223
MEH7xx		Right	Male	Pellet	2.0-mm Port	w/Cap	
MEH7Wxx	◆	Right	Male	Wire	2.0-mm Port	w/Cap	
MEH8xx		Right	Male	Pellet	No Port	w/Cap	
MEH900Rxx		Right	Male	Pellet	2.0-mm Port	w/Cap	900A
MEH900Sxx		Straight	Male	Pellet	2.0-mm Port	w/Cap	900A
MPH1xx		—	None	None	Female Luer	w/Cap	
MPH3xx		—	None	None	Male Luer	w/Cap	
MPH4xx		—	None	None	2.0-mm Port	w/Cap	
MPH6Pxx	◆	Right	Male	Pellet	Female Luer	w/Cap	Piconozzle Kit (5430-XX)
MPH6Rxx	◆	Right	Male	Wire	Female Luer	w/Cap	Piconozzle Kit (5430-XX)
MPH6Sxx		—	None	None	Female Luer	w/Cap	Piconozzle Kit (5430-XX)

* Specify O.D. of glass (1.0, 1.2, 1.5 or 2.0 mm) by replacing XX in the Order Number with 10, 12, 15 or 20.



NANOFIL™ MICROLITER SYRINGE

NanoFil is a custom-designed syringe created for better microinjection in mice and other small animals. It is much easier and more accurate than any other method currently in use for quantitative nanoliter injection. It is available in 10 μ L (**NanoFil**) and 100 μ L (**NanoFil-100**) sizes.



26G BEVELED REPLACEMENT NANOFIL NEEDLES

- NF26BV-2



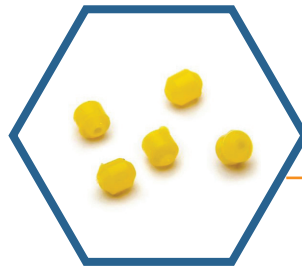
NANOFIL APPLICATION KITS

- Beveled (**IO-KIT**)
- Blunt (**RPE-KIT**)



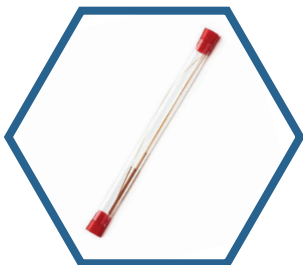
NANOFIL INJECTION HOLDER

- NFINHLD



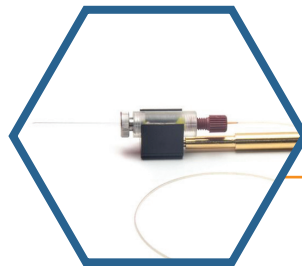
SPARE SILICONE GASKET FOR NANOFIL & HOLDER

- NFGSK-5



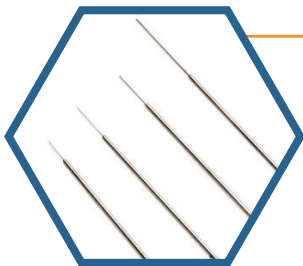
34G FLEXIBLE QUARTZ TUBING FOR FILLING

- NFQ34-5



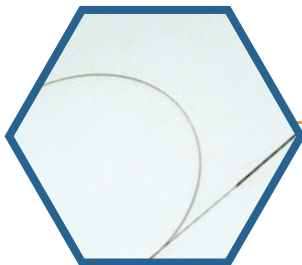
1.0 MM GLASS PIPETTE HOLDER FOR NANOFIL SYRINGE NANOFIL & HOLDER

- NFINHLD-G10



NANOFIL NEEDLES

- Beveled, 33-36G (**NF33-36BV**)
- Beveled, 33G (**NF33BV-2**)
- Beveled, 34G (**NF34BV-2**)
- Beveled, 35G (**NF35BV-2**)
- Beveled, 36G (**NF36BV-2**)
- Blunt, 33-36G (**NF33-36BL**)
- Blunt, 33G (**NF33BL-2**)
- Blunt, 34G (**NF34BL-2**)
- Blunt, 35G (**NF35BL-2**)
- Blunt, 36G (**NF36BL-2**)



SILFLEX TUBING

- SILFLEX-2

WORLD PRECISION INSTRUMENTS

www.wpiinc.com

ORDER TOLL-FREE: (866) 606-1974 (U.S. only) • Tel: (941) 371-1003 • Fax: (941) 377-5428 • E-mail: wpi@wpiinc.com

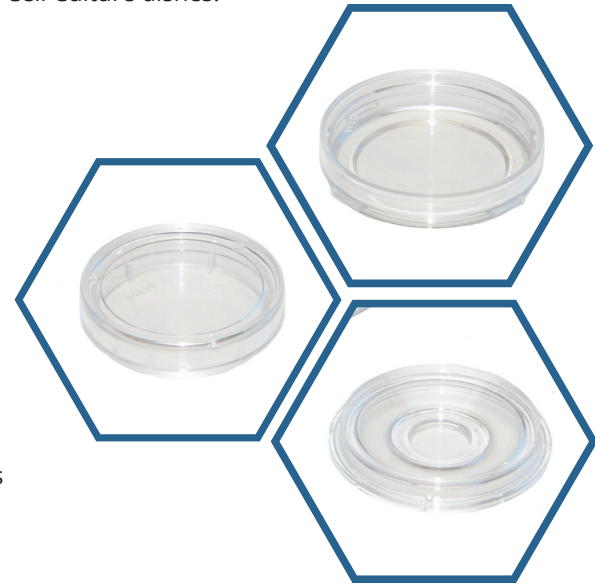
FLUORODISH™ CELL CULTURES DISHES

Better imaging quality is provided by WPI's optical quality glass bottom FluoroDish Cell Culture dishes.

- Small sample volumes for expensive chemicals or experimental drugs.
- Smallest access angle to allow for easier insertion of a micropipette during cellular microinjection.
- Ideal for live cell imaging and embryo research.
- Optical grade, glass bottom dishes for clear images.
- Cited in hundreds of reference articles.

BOTTOM IS AS THIN AS A COVER SLIP

Our cell culture dishes have optical-grade glass bottoms that are the thickness of a coverslip ($0.17 \text{ mm} \pm 0.01 \text{ mm}$ thick), providing better imaging quality. This allows for a much shorter working distance and the use of immersion objectives for the highest magnification possible. This glass has an exceptional UV transmission rate of 30% (at 300 nm). The UV transmission rate of the most popular German glass is less than 7%. Because our FluoroDish glass bottoms have a larger numerical aperture, you can use a higher magnification (up to 100X). The images you produce will differ depending on whether you use classical or fluorescent microscopy.



LOW SAMPLE VOLUMES

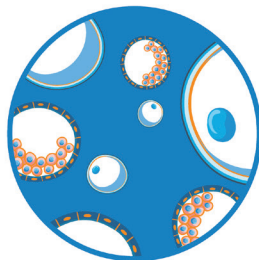
These dishes are ideal when using expensive drugs or chemicals due to their low sample volume. Only 115 μL is required to cover the bottom well of our FD3510 Fluorodish with a 10 mm well! Try our FD5040 50 mm cell culture dishes for large growth areas. There are several sizes available, so you can select the best one for your needs. You can even get these dishes with a Poly-D-Lysine coating, which aids in neuron adhesion.

DESIGNED FOR RESEARCH

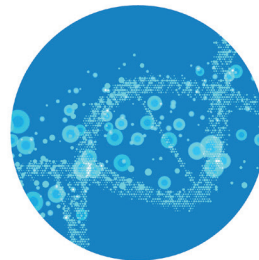
The culture dishes' slim side walls provide a low access angle, allowing for greater flexibility in microelectrode placement. For low background fluorescent measurements, black wall dishes are available. To ensure the viability of your cell cultures, culture dishes are made with a low toxicity adhesive.



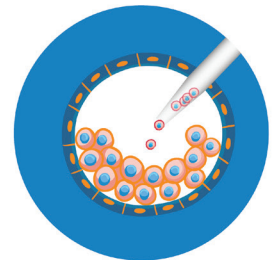
**HIGH RESOLUTION
IMAGING**



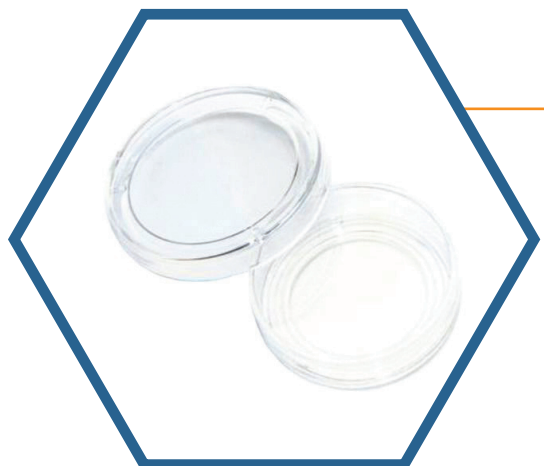
**LIVE CELL
IMAGING**



**ELECTROPHYSIOLOGY RECORDING
OF FLUORESCENT TAGGED CELLS**



MICROINJECTION

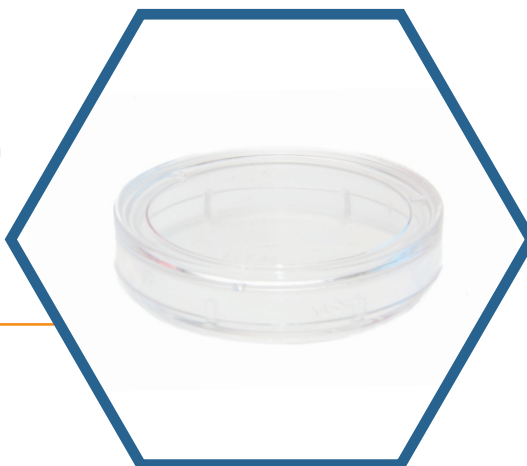


FD35-100

- FluoroDish Cell Culture Dish
- 35mm Diameter
- 23mm Well

FD3510-100

- Poly-D-Lysine Coated

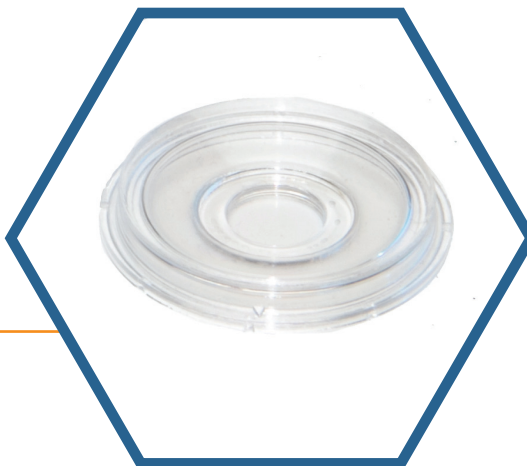


FD5040-100

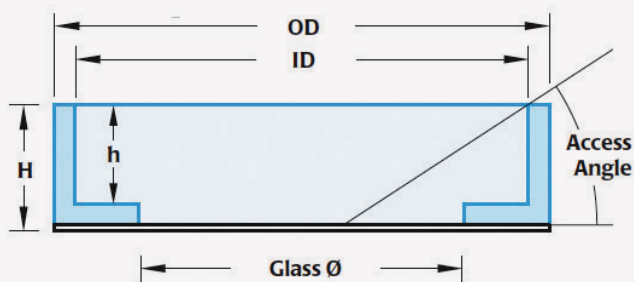
- FluoroDish Cell Culture Dish
- 50mm Well

FD3510-100

- FluoroDish Cell Culture Dish
- 35mm Diameter
- 10mm Well

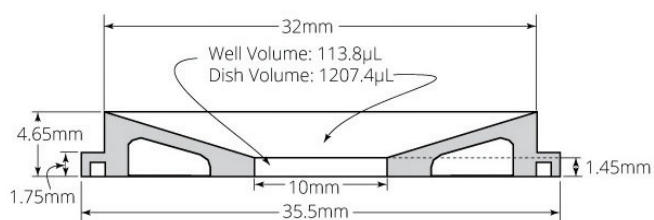


STANDARD FLUORODISHES

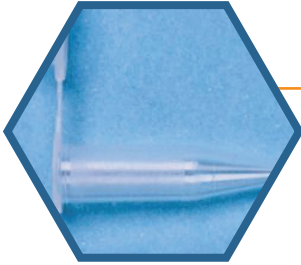


Style	ID (mm)	OD (mm)	Glass Ø (mm)	Height (inside)	Height (outside)	Access Angle
FD35	33	35.5	23.5	7.8	9	29
FD5040	47.5	49.82	35	7.25	7.4	17

LOW VOLUME FLUORODISHES (FD3510)



CENTRIFUGES



MICROCENTRIFUGE TUBES

- 0.5mL (503529)
- Natural 1.5mL (503530)
- Pkg of 1000



MINI CENTRIFUGE, BLUE LID, 2 ROTORS, 110V

- 504321
- 9 position Microtube Rotor
- Storage Compartment for PCR Rotor
- Quiet Operation
- Starts and Stops in Seconds



MICROCENTRIFUGE TUBES 2.0ML

- 503531
- 2.0mL
- Pkg of 1000



MINI CENTRIFUGE, PURPLE LID, 2 ROTORS, 240V

- 504328
- 8 Position Microtube Rotor
- Storage Compartment for PCR Rotor
- Quiet Operation
- Starts and Stops in Seconds



MICROCENTRIFUGE TUBE STRIPS 0.2ML

- Domed Cap Strips (503532)
- Flat Cap Strips Included (503537)
- Pkg of 250



MICRO-CENTRIFUGE

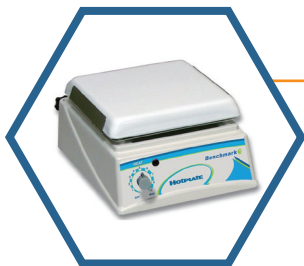
- G-SPIN6
- Small Size with Rubber Feet Keeps the Centrifuge Stable
- Interchangeable Rotors and Adapters for 0.5-2.0mL Microtubes or PCR Strips
- On/Off Switch Lets You Start and Stop in Seconds
- Safety Switch Stops Rotor



MICRO-CENTRIFUGE, 220V

- G-SPIN6-220
- Simple, Precise, and Durable
- 5 Micrometer Resolution
- Engineered for Stability and Built on a 12-pound Steel Plate
- For Direct Table Top Use

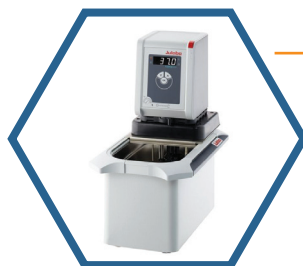
HOTPLATE



HOTPLATE, 115V

- 504312
- CE Certified
- Ceramic Work Surface, 7.5 x 7.5 Inches
- Temperature Control Up to 380°C

CIRCULATING WATER BATH, 5L



- 115 V (505060)
- 230 V (505062)
- Stainless Steel Bath Tank
- Temperature Accuracy $\pm 0.03^{\circ}\text{C}$
- 60 Hz Heat Only

STERILIZERS AND AUTOCLAVES



STERI-LITE GLASS BEAD STERILIZER

- 150 g/US (ST5191)
- 300 g/US (ST5193)
- Available with International Power Supplies



BENCHTOP AUTOCLAVE, 16 LITER

- 110 V US Plug (ST5189)
- 230 V Euro Plug (ST5189-EU)
- 16 L Tank
- Dimensions 56 x 44.5 x 40cm (21.7x17.5x15.7")
- Tray Dimensions 16.5 x 27 cm (6.5x10.75")
- Weight 40kg (89 lbs)

WATER BATHS



CIRCULATING WATER BATH, 13L

- 115 V (505061)
- 230 V (505063)
- Stainless Steel Bath Tank
- Temperature Accuracy $\pm 0.03^{\circ}\text{C}$
- 60 Hz Heat Only

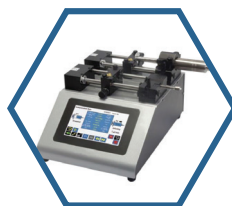
SYRINGE PUMPS

ALADDIN PUMPS



- Aladdin Single-Syringe Infusion Pump
 - 2 AL-1000 Pumps (AL-2000)
 - Infuse Only (AL-300)
 - Standard (AL-1000)
- Programmable Double Syringe Pump (AL-4000)
- Multi-Barrel Programmable 6 Syringe Pump (AL-6000)
- Multi Programmable Syringe Pump (AL-8000)

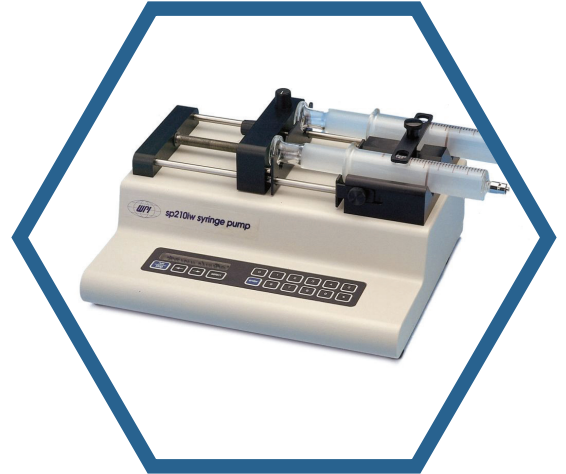
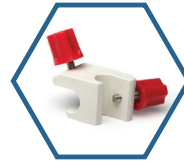
LEGATO PROGRAMMABLE PUMPS



- Dual Rate Syringe Pump (SPLG-G88PLUS)
- SPLG Syringe Pump with Touchscreen
 - Dual Infuse Only (SPLG101)
 - Infuse Only (SPLG100)
 - Infuse/Withdrawl (SPLG110)
- SPLG Syringe Pump
 - Infuse Only (SPLG200)
 - Infuse/Withdrawl (SPLG210)
 - Programmable Infuse/Withdrawl (SPLG212)
 - Programmable Push-pull (SPLG272)
 - Push-pull (SPLG270)
- Adagio Software/USB Key (504578)

OTHER LAB SUPPLIES

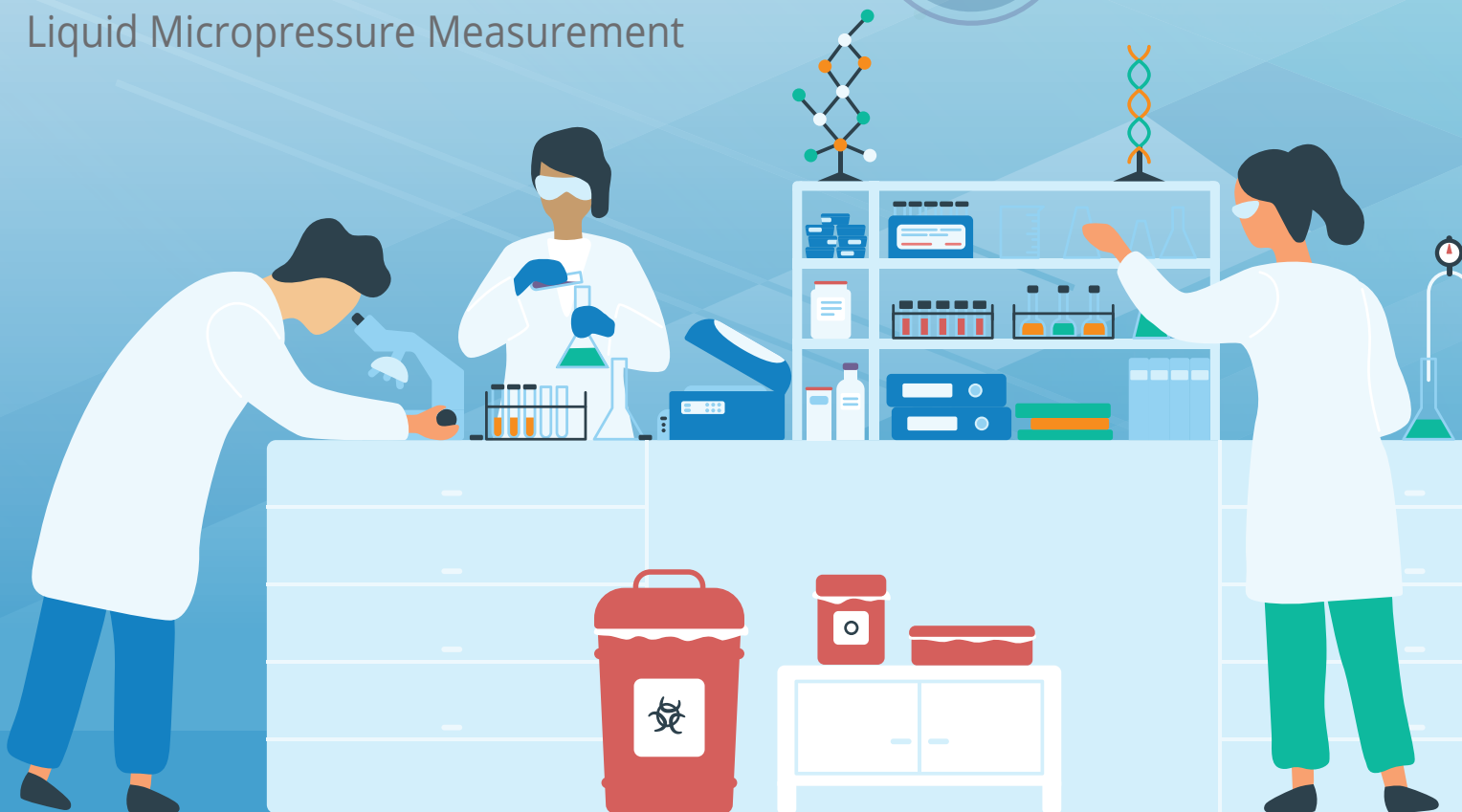
- MICRO-PROCESSOR CONTROLLED SYRINGE PUMPS
- THERMOMETERS
- STANDS AND CLAMPS
- SPECIALTY WIRE (PLATINUM IRIIDIUM, TUNGSTEN, TIN, SILVER, GOLD, TITANIUM, AND CARBON)
- POWER SUPPLIES.
- CONNECTORS AND ADAPTERS
- CABLES
- RACKMOUNTS
- LIGHT SOURCES FOR MICROSCOPES
- MICROSCOPE CAMERAS
- CAMERA ACCESSORIES, CABLES & MOUNTS
- MICROSCOPE SLIDES
- MISCELLANEOUS LAB SUPPLIES (DEMAGNETIZER, AGAROSE, SCREWDRIVERS AND MORE)
- ABSORBENT PAPER POINTS
- KITS
- STUDENT INSTRUMENTS
- VASCULAR CATHETERS
- EAR PUNCHES AND TAGS
- BIOPSY PUNCHES
- RODENT BRAIN MATRICES



SAVE TODAY WITH WPI's **NEW LAB PROGRAM**

With Customizable Application Packages

- Microinjection
- Neuroscience
- Ophthalmology
- Small Animal Surgery
- TEER Measurement
- Liquid Micropressure Measurement



Save more with the

WPI NEW LAB PROGRAM

Application Packages • Expert Help • Save on Lab Supplies

www.wpiinc.com/newlab

Laboratory equipment for life science research

Visit us at www.wpiinc.com



**WORLD
PRECISION
INSTRUMENTS**