



GOLD
AWARD
2022



red dot winner 2022



Benchtop digital microscope
Celloger[®] Nano

| Introduction

Table of contents

I. Benchtop digital microscope

1. Introduction
2. Key features

II. Live cell imaging system

1. Introduction
2. Key features
3. Applications

III. Specification

IV. Celloger[®] series



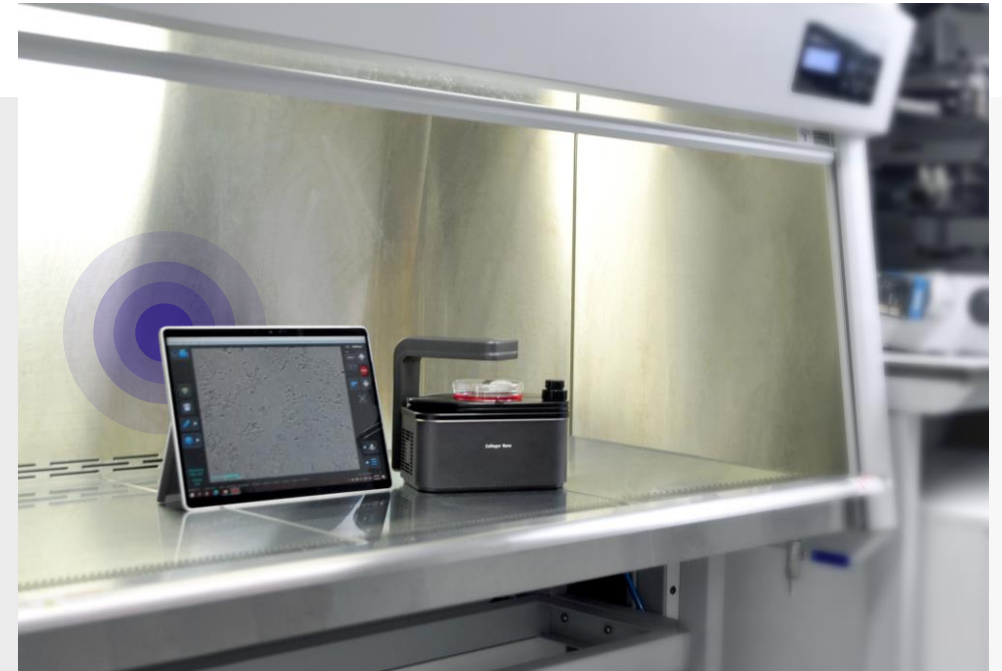
I. Benchtop digital microscope

1. Introduction
2. Key features



**“Check your cell anytime, anywhere.
No more guessing!”**

Celloger® Nano is a benchtop digital microscope equipped with a wireless connection, enabling you to check the state of your cells in real-time from any location within your laboratory. With all the necessary functions to check the cells, you can quickly assess the condition of your cells.

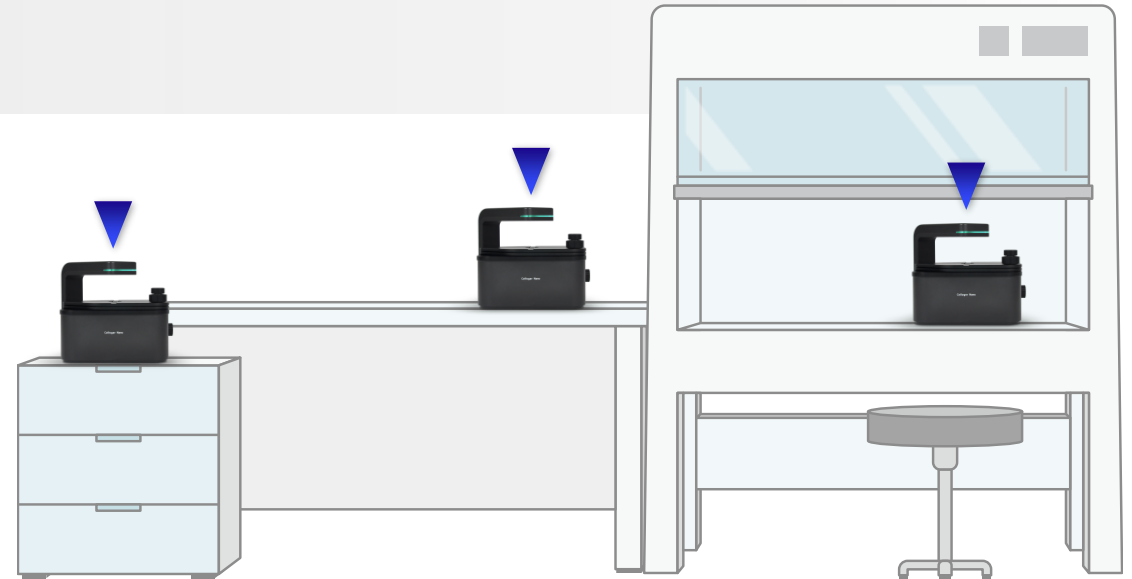


The super compact benchtop digital microscope, Celloger® Nano can be placed inside a clean bench and incubator without the risk of contamination of cells. It greatly enhances the efficiency of daily cell culture works through a simple and easy operation.

I. Quick cell check

- Celloger® Nano is a system perfectly suitable for confirming the conditions of cells in various locations depending on the researcher's experimental needs. It enables quick and efficient inspection of cells, allowing researchers to rapidly identify potential issues in their samples.

- Compact size and lightweight design make it easy to carry and install in any laboratory setting. It can be utilized as a personal device on your desk, depending on the purpose of your experiment.



II. Suitable for tablet

- The wireless connection enables easy data transfer, allowing you to check your cells without space constraints. It provides software optimized for laptops and tablets, ensuring a seamless user experience.
- Celloger® Nano can be easily installed without a complicated connection process, saving you time.



Wireless connection

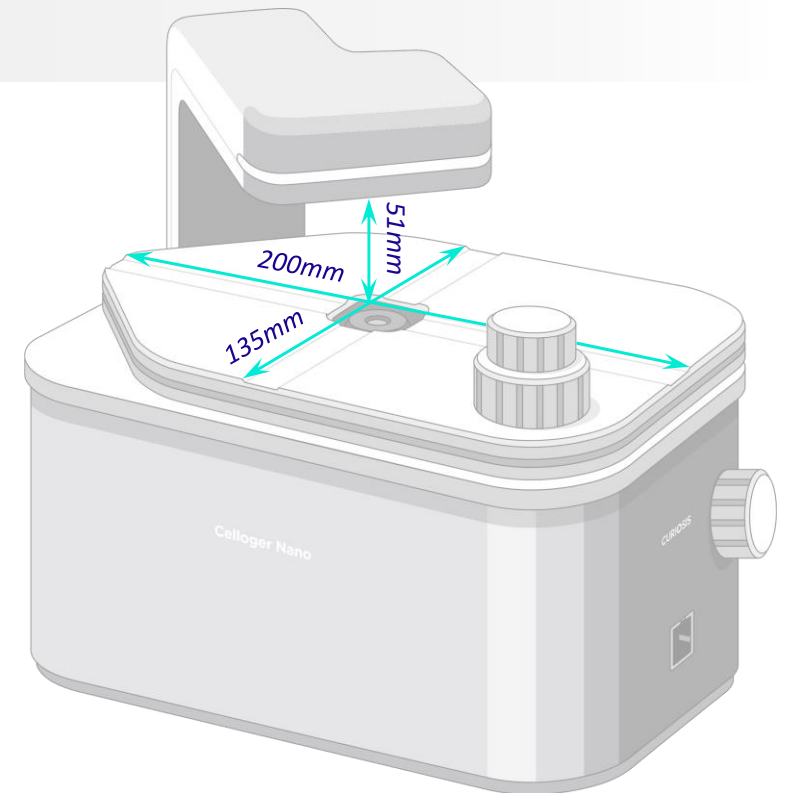


III. Multiple vessel types

- Different kinds of vessels can be used in Celloger® Nano using its wide stage that gives enough space for large labware placement.

Compatible with Celloger® Nano

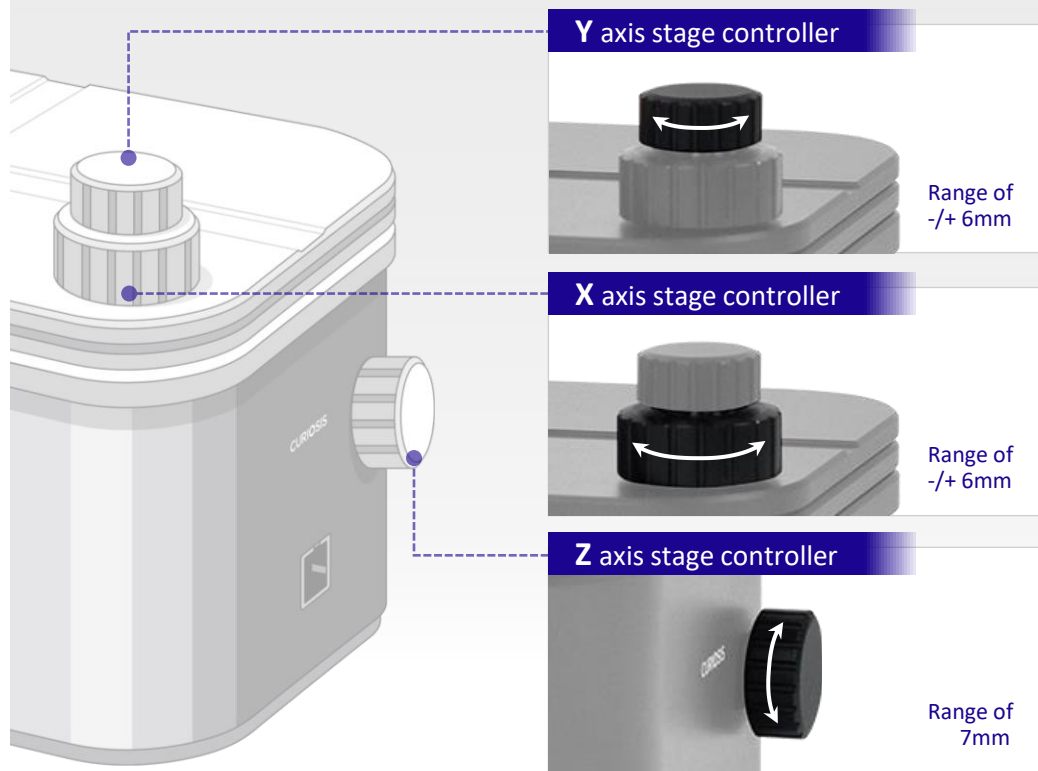
- 35~150mm dish
- 6~384 well plate
- 25~175cm² Flask
- Round bottom 96well plate
- Deep well plate
- Cell culture slide



IV. User-friendly function

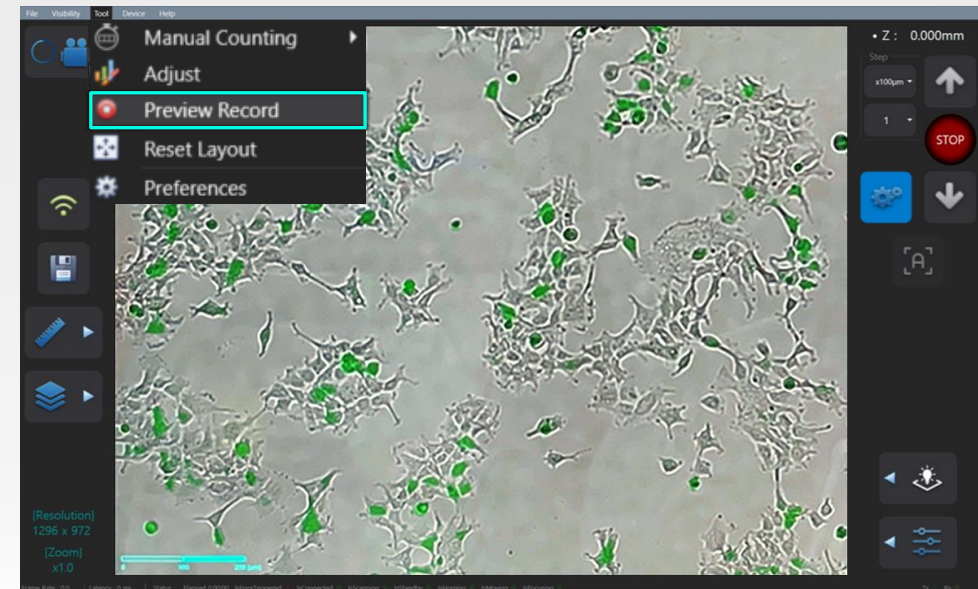
1. Precise stage controller

The sample positioning is done with a simple touch by using the precise stage controller.



2. Preview record

Image shown on the display can be recorded and saved while streaming in Scan App.



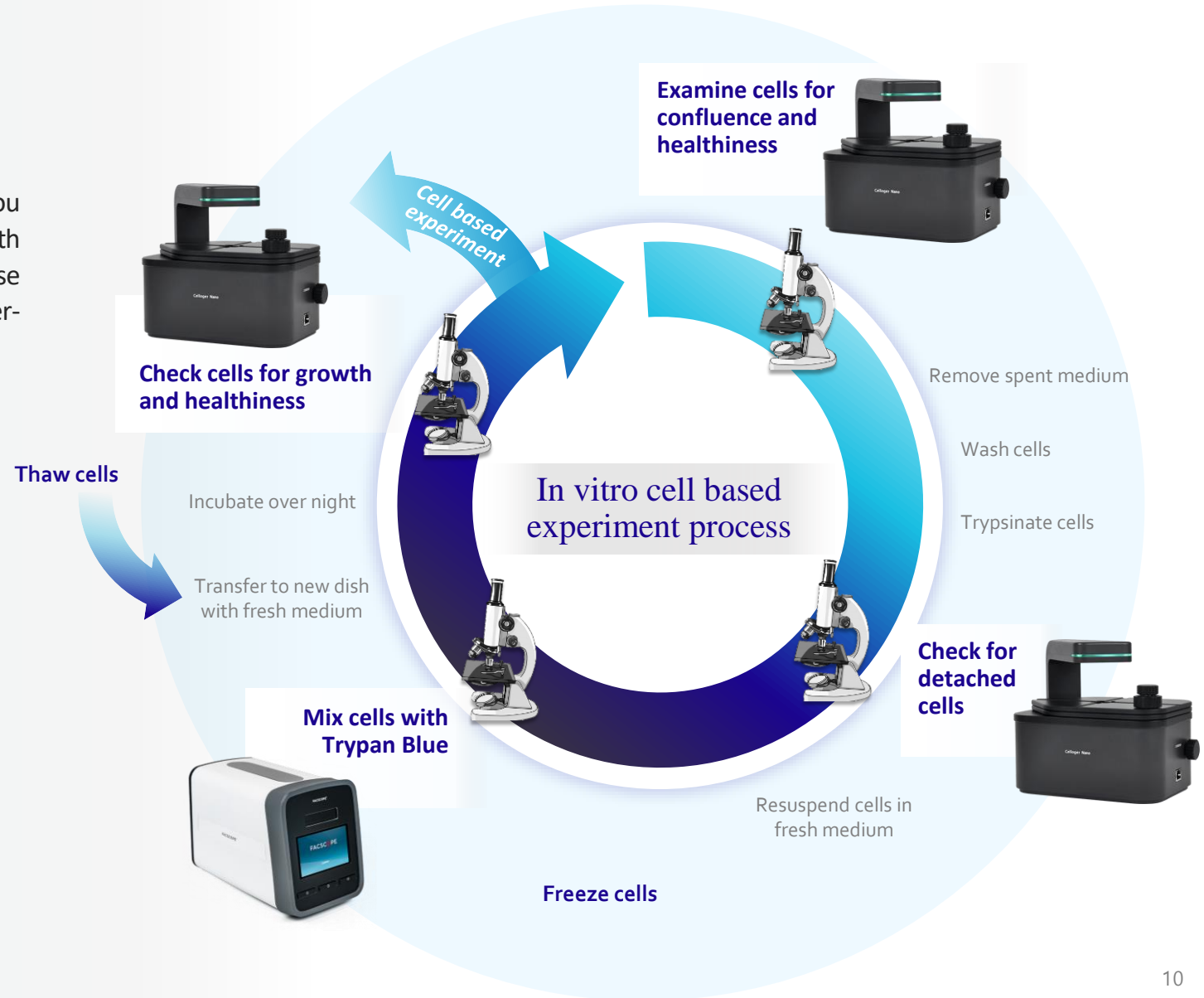
II. Live cell imaging system

1. Introduction
2. Key features
3. Applications



Expand your cell-based research through our multifunction live cell imaging system, Celloger® Nano.

The live cell imaging system, **Celloger® Nano** - got everything you need to perform your sophisticated laboratory works. Equipped with exceptional fluorescence and bright field microscopy, time-lapse imaging, auto-focusing technology, precise stage controller, and user-friendly software, accelerates your cell-based research works.



I. Fit into standard CO₂ incubator

- Celloger[®] Nano is a very compact system with a size almost equivalent to half of A4 paper. Compared to other products, several Celloger[®] Nano systems can fit into a standard CO₂ incubator.
- Since the system weighs less than 3.2kg, it can be easily carried in and out of the incubator during the experiment.

Maintaining the performance of a device working in a hot and humid environment is very challenging. With Celloger[®] Nano, it is equipped with a fan that minimizes risk factors such as preventing moisture from forming and making it easier for maintenance.

Celloger[®] Nano



211 x 146 x 188 mm

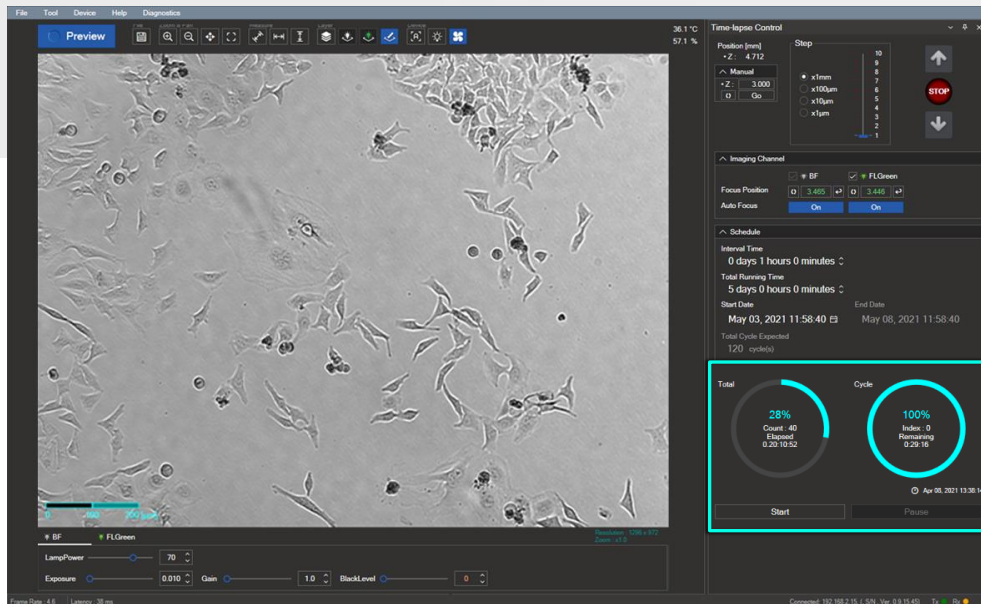
Other



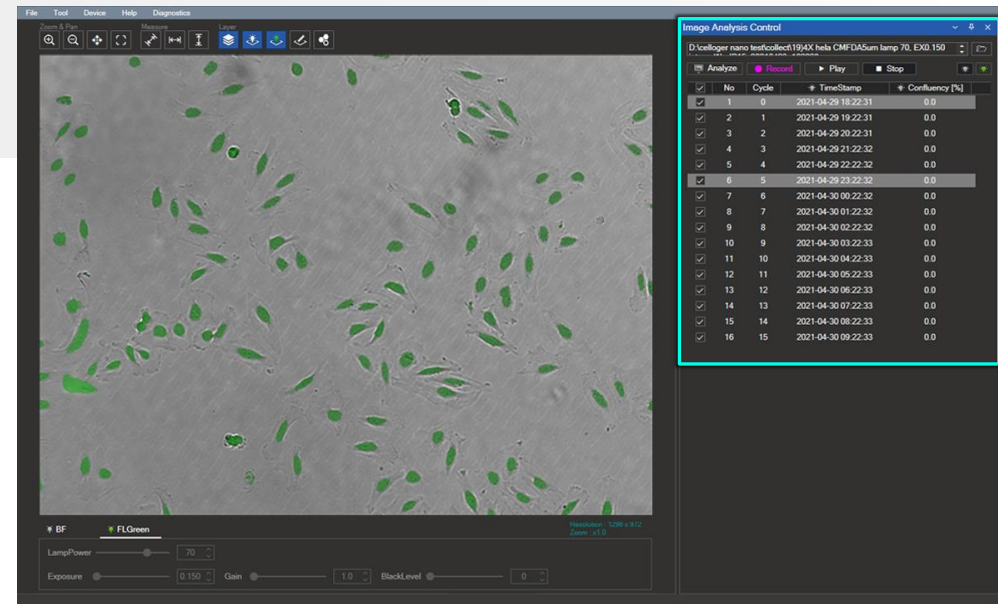
305 x 195 x 220 mm

II. Time-lapse video

- Using Celloger® Scan App, you can capture images according to the schedule you set. Furthermore, with Celloger® Nano Analysis App, it is possible to make time-lapse videos including BR, FL, and merged images in simple clicks.



Intuitive time-lapse scheduling using Celloger® Nano Scan App

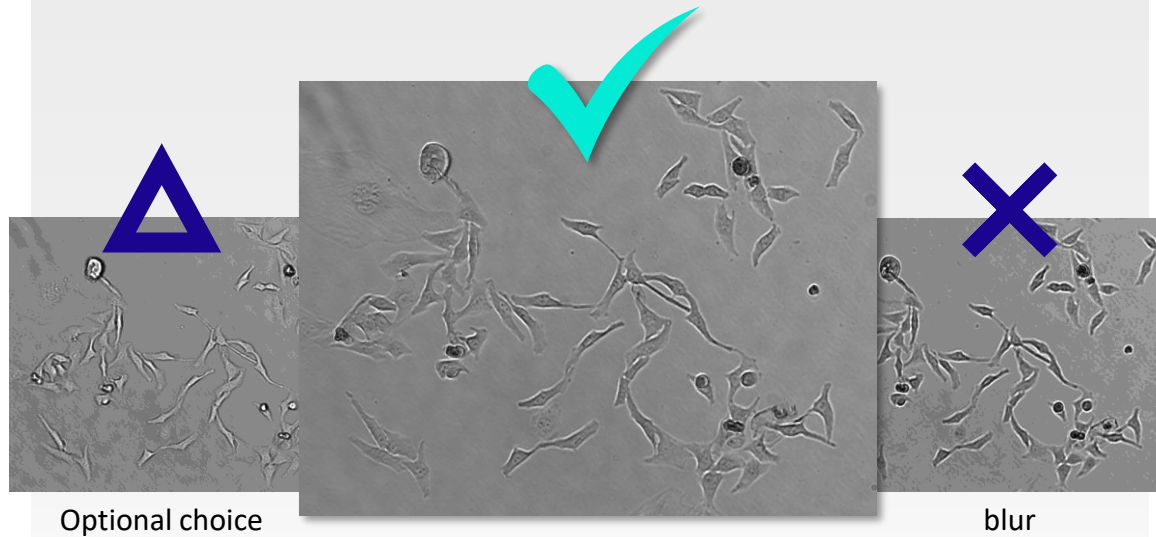


Time-lapse video including BR & FL merged images can be made using the analysis app.

III. User-friendly function

1. Autofocusing

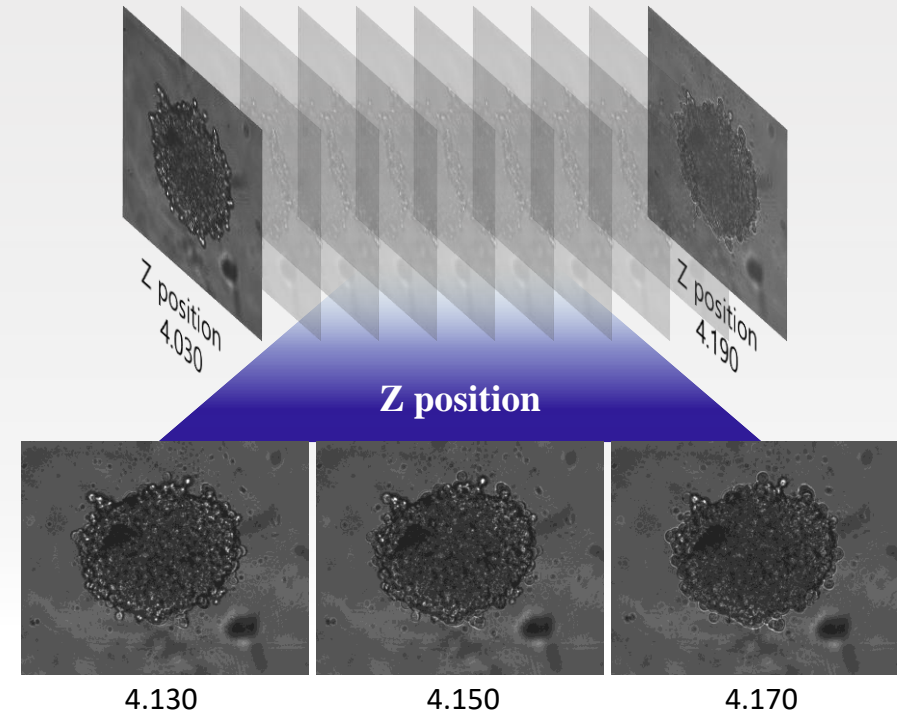
Curiosis' unique autofocusing technology finds clear focal plane of cells and has excellent repeatability.



User can adjust autofocusing range/resolution

2. Z-stacking

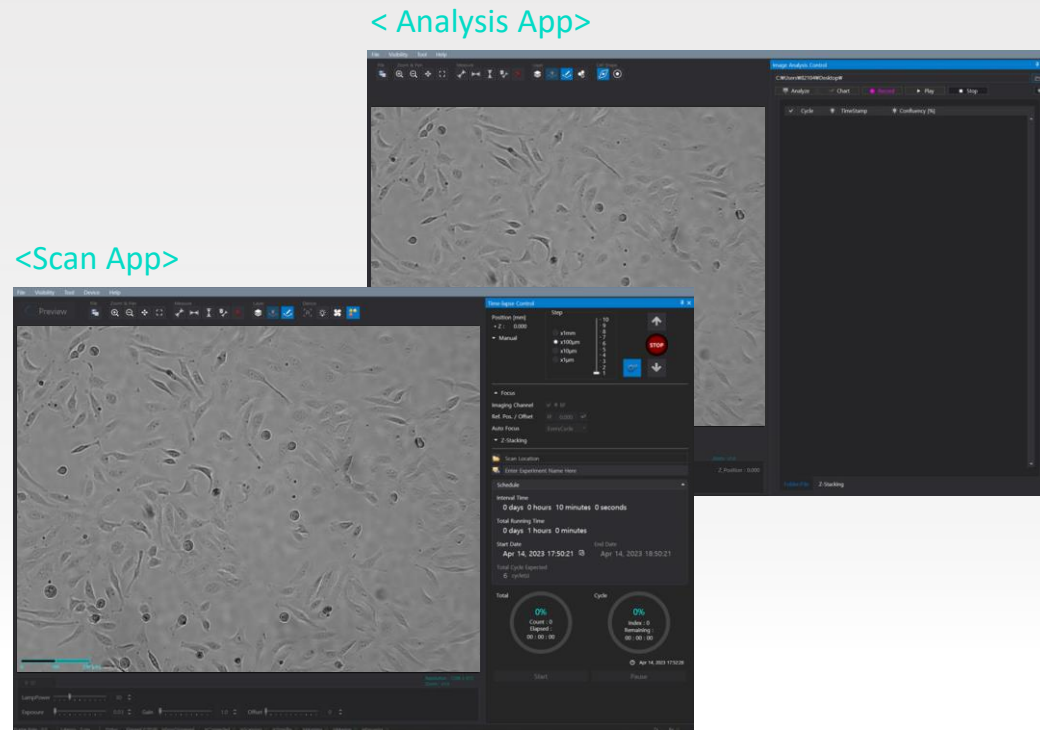
With Z-stacking function, spheroid cells can be observed using time-lapse imaging.



III. User-friendly function

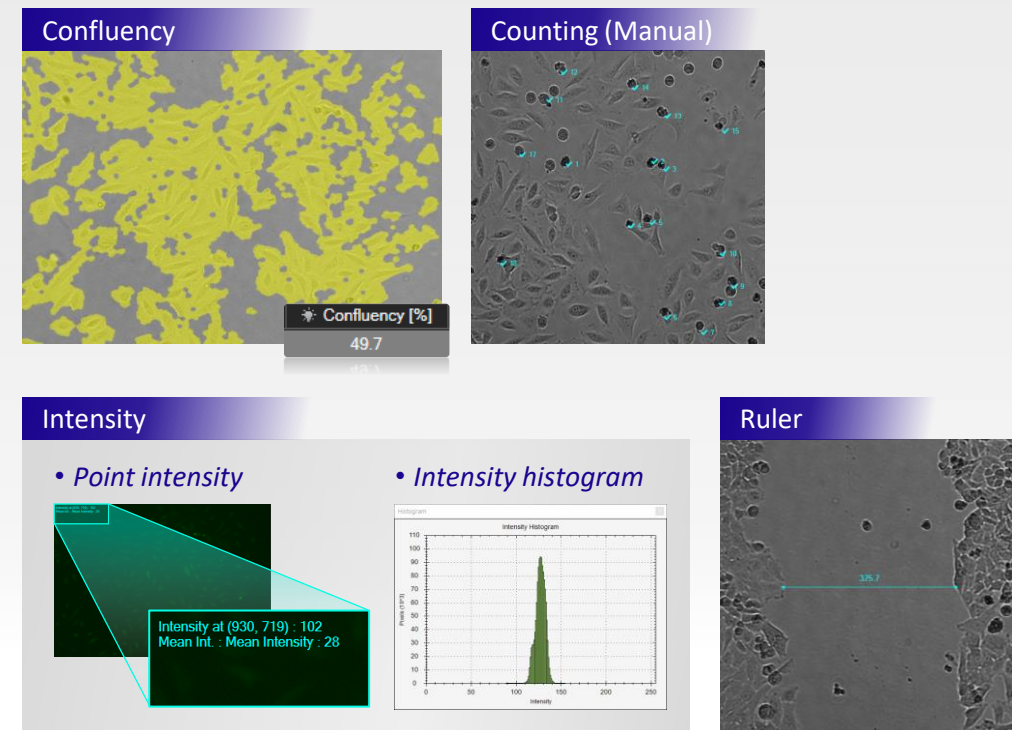
3. Software package

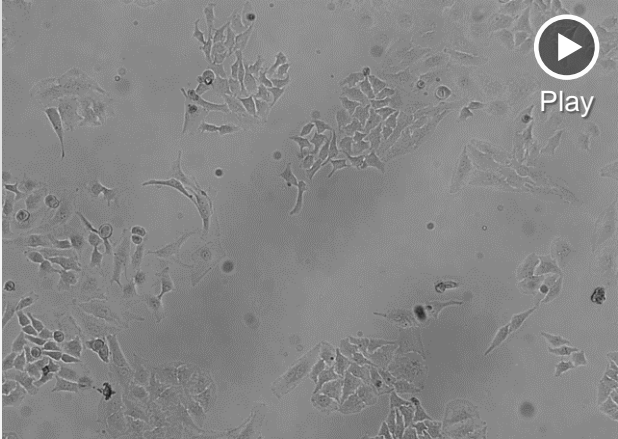
Scanning and Analysis software is included as a standard package, and you can make unlimited copies of the software.



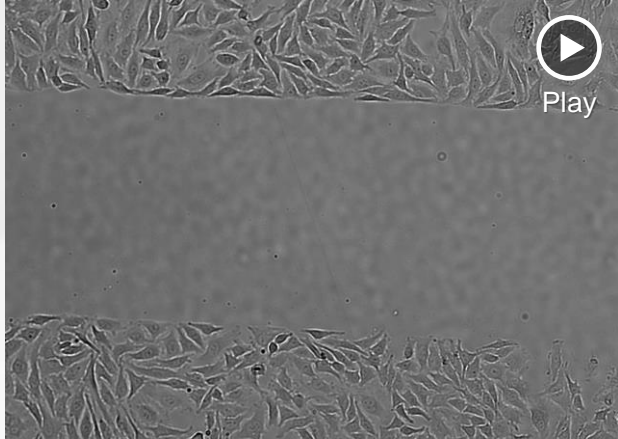
4. Analysis tools

With Z-stacking function, spheroid cells can be observed using time-lapse imaging.

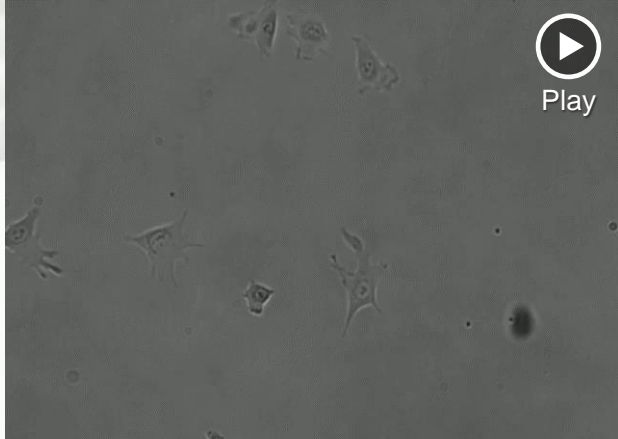




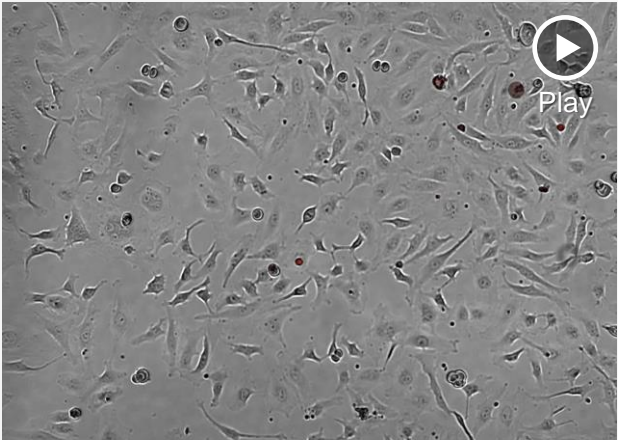
Cell morphology



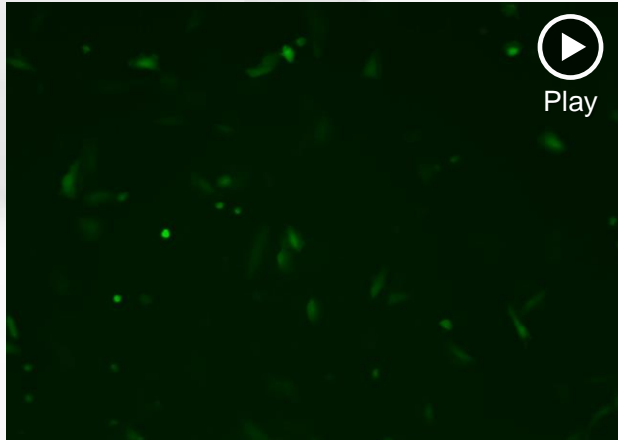
Wound healing assay



Cell proliferation



Cytotoxicity assay



Transfection efficiency assessment



Apoptosis assay

III. Specification

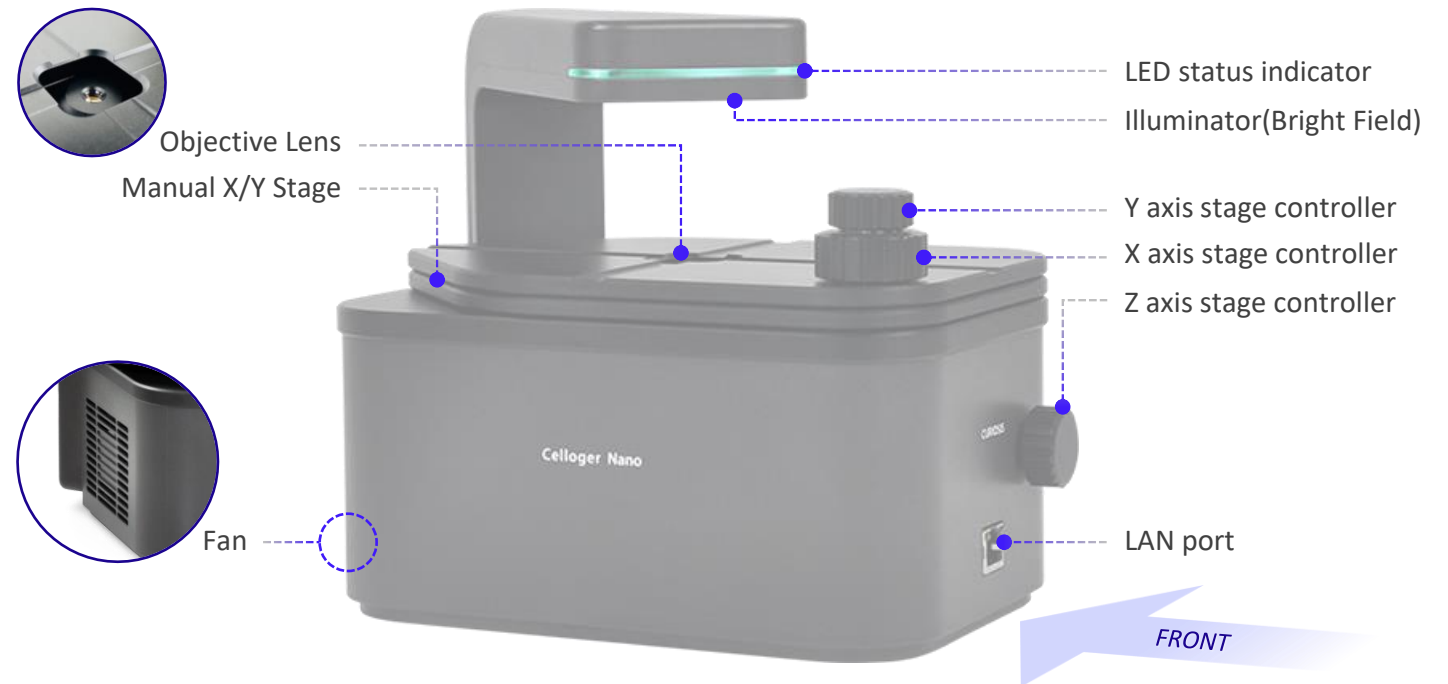


• Specification

Dimension	211 x 146 x 188 mm
Weight	3.2kg / 7.0lb
Objective Lens	2X / 4X / 10X
Imaging modes	Brightfield, Fluorescence (Green / Red)
Fluorescence	Green : Excitation (470/40x) / Emission (510lp) Red : Excitation (525/30x) / Emission (570lp)
Field of view	2X (2.8x2.0 mm) / 4X (1.4 x 1.0 mm) / 10X (0.5 x 0.4 mm)
Camera	1.25MP CMOS
Focus	Manual / Autofocusing
Imaging positions	Single
File export format	TIFF, AVI (JPEG, PNG)
Culture vessels	Flask, dish, well plate, slide

• Ordering information

Cat. No.	Description	Cat. No.	Description
CRCLG-NB02	Bright-field, 2X	CRCLG-NBG10	Bright-field + Green Fluorescence, 10X
CRCLG-NB04	Bright-field, 4X	CRCLG-NBR04	Bright-field + Red Fluorescence, 4X
CRCLG-NB10	Bright-field, 10X	CRCLG-NBR10	Bright-field + Red Fluorescence, 10X
CRCLG-NBG04	Bright-field + Green Fluorescence, 4X	CRCLG-NTS	Celloger® Nano tablet set (PoE, Tablet, SW)



IV. Celloger® Series



Celloger® series line up

CURIOSIS



	Celloger® Nano	Celloger® Mini	Celloger® Mini Plus	Celloger® Stack	Celloger® Pro
Image mode	Bright-field, Fluorescence (Green/Red)	Bright-field	Bright-field, Fluorescence (Green/Red)	Bright-field	Bright-field, Fluorescence (Green & Red)
Multi-position	X	O	O	O	O
Stage type	Manual XY, automatic Z moving	Automatic XYZ moving (stage moving type)	Automatic XYZ moving (camera moving type)		
Focusing	Autofocusing & Manual focusing				
Magnification	2X / 4X / 10X	4X	2X / 4X / 10X	2X	2X, 4X, 10X (User interchangeable-option)
Dimension	211*146*188mm	195*305*220mm	226*358*215mm	350*330*450mm	250*338*412mm
Weight	3.2kg	4.5kg	5.6kg	15.0kg	9.6kg
Operating environment	10-40°C temperature, 20-95% humidity				
End user price	\$5,250~	-	\$25,000~	\$40,000	\$60,000

Thank you

End of Document

Curiosis Inc.

4F 10, Teheran-ro 38-gil, Gangnam-gu, Seoul 06221, South Korea | T 82 2 508 5237 | F 82 2 508 5246 | sales@curiosis.com

www.curiosis.com