



WORLD  
PRECISION  
INSTRUMENTS

# INSTRUCTION MANUAL

## MPS-4

*Install MPS-4 Software (WIN 10)*

Serial No. \_\_\_\_\_

[www.wpiinc.com](http://www.wpiinc.com)

010720



1. Follow the steps found in the document called “MPS-4 Disable Driver Signature Enforcement (Win10)” to temporarily disable driver signature enforcement.
2. Find the program **MPS-4 19.07.exe** in the computer directory or CD and double click on it to begin the installation.
3. Using the provided USB cable, connect the USB port of host computer to the USB port (square) of the **MPS-4** controller, and then turn on the power of the **MPS-4** controller. At this time, the note appears in the lower right corner of the computer display screen.

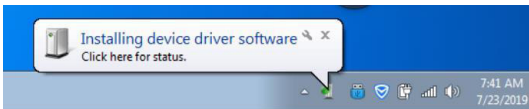


Fig. 1—A note appears when the USB cable is plugged into the computer.

4. Click on the Installing device driver software, and a pop-up window appears. Close the window.

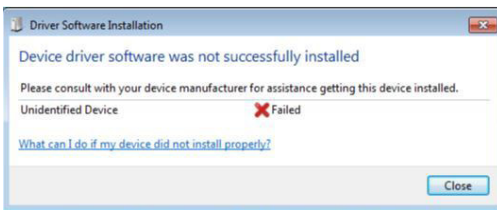


Fig. 2—Click close to acknowledge the message.

5. The windows shown in this procedure are an example of how to install driver software in the directory. The windows will display differently on your computer depending on what is installed on your computer. When the device manager is opened, the Other devices\Unknown device with yellow background exclamation mark will appear in the directory, as shown in the figure below.

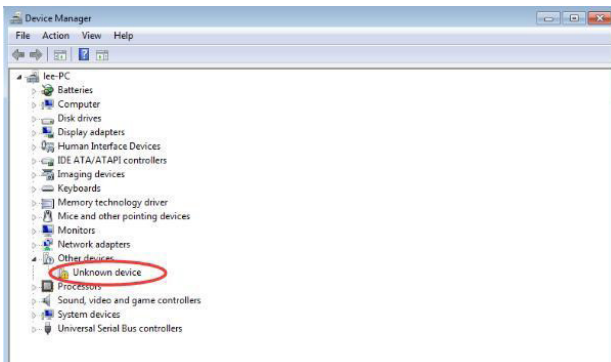


Fig. 3—Select the Unknown device.

6. Right click Unknown device and open the following window under Properties.

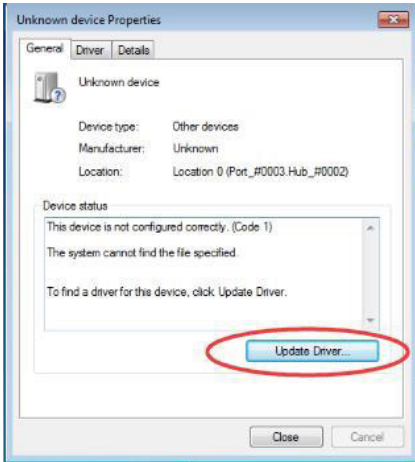


Fig. 4—Click the Update Driver button.

7. Click the Update Driver... button. The following window appears.

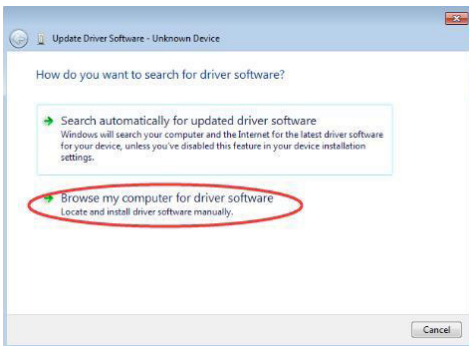


Fig. 5—Select the option to Browse my computer.

8. Select and click Browse my computer for driver software. A similar window appears.

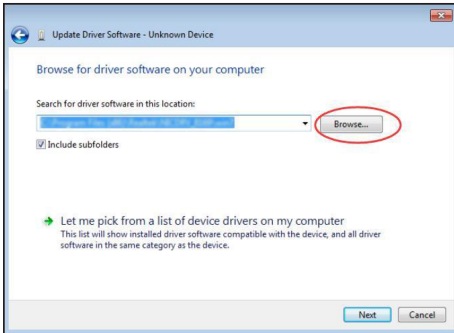


Fig. 6—Click the Browse button.

9. The directory listed for the default driver installation location varies from one computer to the next. So you need to click the Browse button to locate the directory on disk specified from running **MPS-4 19.07.exe** during the installation. For example, on this computer, the **MPS-4** program was specified to be installed in the following directory location: C:\Program Files(x86)\MPS-4\Driver\x64.

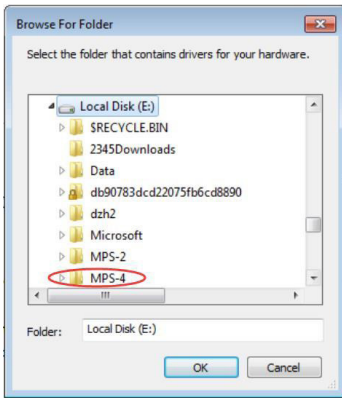


Fig. 7—This is the location for the previous version of the software.

10. Click on the subdirectory of MPS-4, find MPS-4\driver\x64, click on it, then click OK, as shown below:

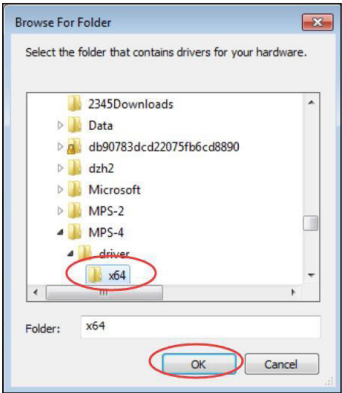


Fig. 8—Select the x64 directory and press OK.

11. After clicking OK, the computer displays the following window.

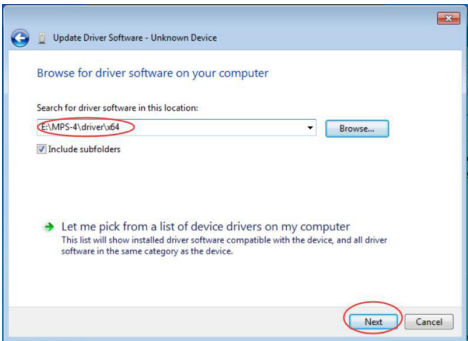


Fig. 9— Click the Next button.

12. This directory should conform to the location where the **MPS-4** driver software was installed from running **MPS-4 19.07.exe** in step 2. Click the Next in the lower right corner, and the following window appears.

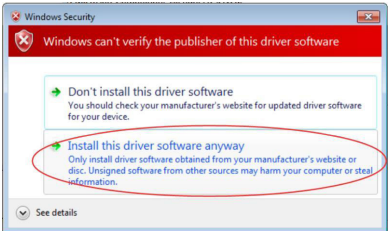


Fig. 10—Click the Install option.

## MPS-4 Install MPS-4 Software (WIN 10)

13. Select and click the Install this driver software anyway, and the system will start to install the driver software. A window appears after the completion.

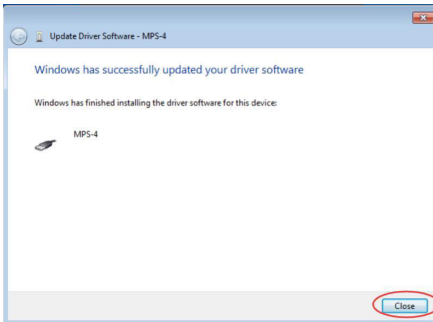
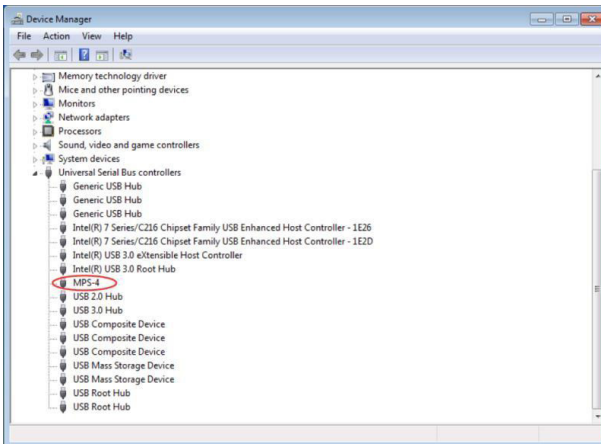


Fig. 11—This note indicates the driver was successfully installed.

14. The Windows system has completed the installation of **MPS-4** driver software. Click Close. Check the device management directory again to see the **MPS-4** in the Universal Serial Bus controllers section and confirm a successful installation of the driver software.



**NOTE:** After the installation of the **MPS-4** driver software, a system reboot automatically resumes the state of the driver signature enforcement and other installation of driver software for new equipment still requires the driver signature enforcement.

15. After the installation, just click on the icon on the screen to run the **MPS-4** program.



### **USA**

175 Sarasota Center Blvd., Sarasota FL 34240-9258  
Tel: 941-371-1003 • Fax: 941-377-5428 • E-mail: sales@wpiinc.com

### **UK**

1 Hunting Gate, Hitchin, Hertfordshire SG4 0TJ  
Tel: 44 (0)1462 424700 • Fax: 44 (0)1462 424701 • E-mail: wpiuk@wpi-europe.com

### **Germany**

Pfingstweide 16, D-61169 Friedberg (Hessen), Germany  
Tel: +49 (0)6031 67708-0 • Fax: +49 (0)6031 67708-80 • E-mail: wpide@wpi-europe.com

### **China & Hong Kong**

WPI Shanghai Trading Co., Ltd.  
Rm 27A, Liangfeng Building, No 8, Dongfang Road, Pudong Free Trade Zone, Shanghai, PR China  
Tel: +86 21 6888 5517 • E-mail: chinasales@china.wpiinc.com

### **Brazil**

Av. Conselheiro Nébias, 756 sala 2611, Santos-CEP: 11045-002, São Paulo Brazil Tel: (013) 406-29703 • E-mail: info@brazil.wpiinc.com

### **Internet**

www.wpiinc.com • www.wpi-europe.com • www.wpiinc.net • www.wpibrasil.com.br