



WORLD
PRECISION
INSTRUMENTS

INSTRUCTION MANUAL

MPS-4

Disable Driver Signature Enforcement (WIN 10)

Serial No. _____

www.wpiinc.com

010720

MPS-4 Disable Driver Signature Enforcement

Since we are using legacy drivers and have not yet gotten the driver signature for Windows 10, you must disable driver signature enforcement temporarily before installing the 64 bit driver. Please follow those steps below.

1. Since you need to restart the computer multiple times during the operation, you need to save your unfinished work and exit all applications before the disable driver signature enforcement.
2. Click the **Start** in the lower left corner of the Windows10 screen, and click the Settings (gear pattern) in the Start window.

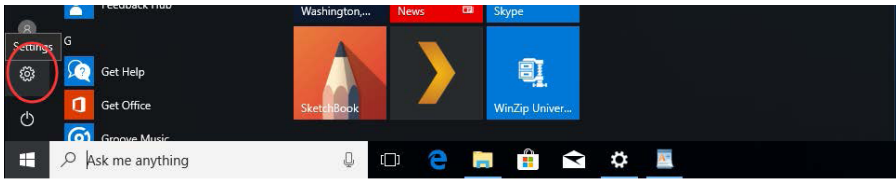


Fig. 1—Click the start button and select the gear icon.

The following window pops up.

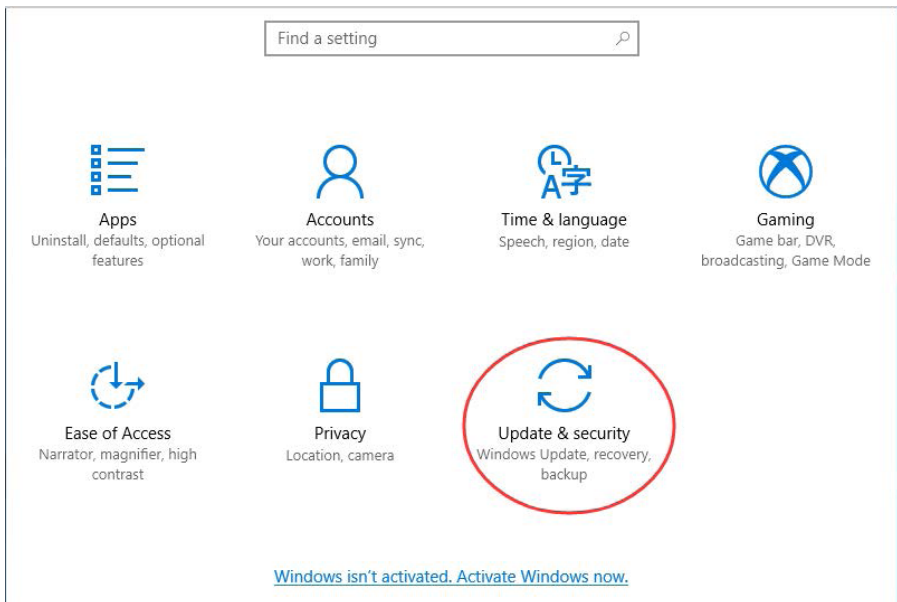


Fig. 2—Click the Update & security icon.

3. Click the option Update & security and a new window appears.

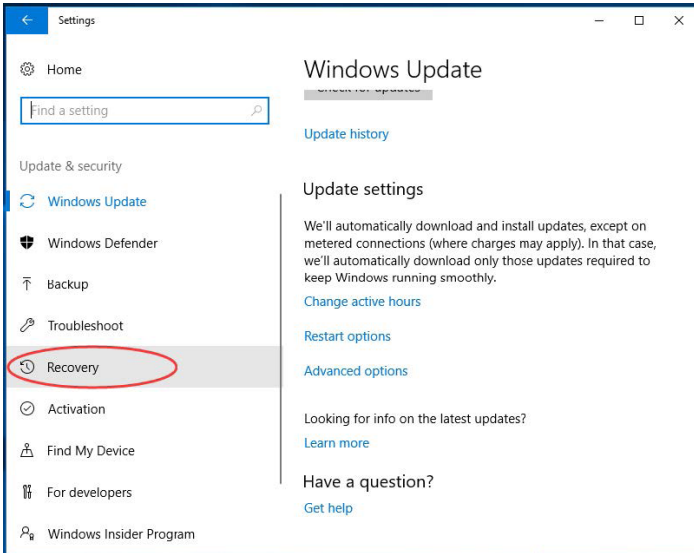


Fig. 3—Select the Recovery tab.

4. After selecting the Recovery tab, the Advanced startup area appears on the right side of the window.

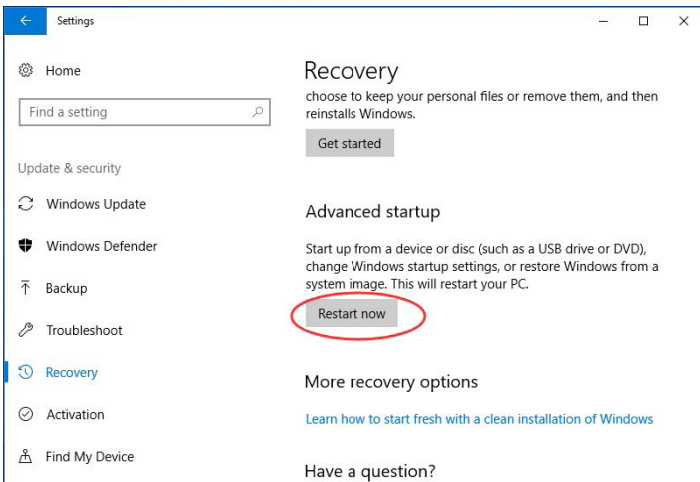


Fig. 4—Click Restart now.

MPS-4 Disable Driver Signature Enforcement

5. Click the Restart now button under the Advanced startup area and the computer will restart.
6. After restart, the Option screen displays.

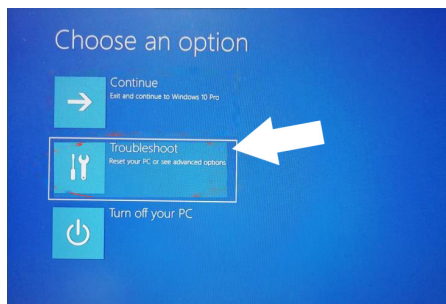


Fig. 5—Click Troubleshoot.

7. After clicking the option Troubleshoot, the Troubleshoot screen appears.

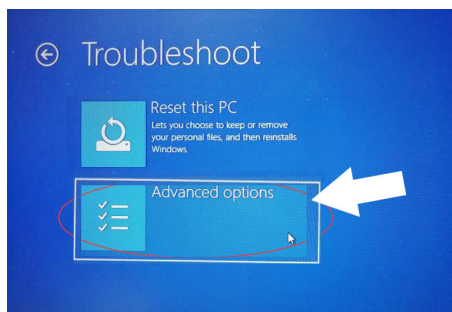


Fig. 6—Click Advanced Options.

8. Click the option Advanced Options, and the screen conversion display as follows to see more recovery options.

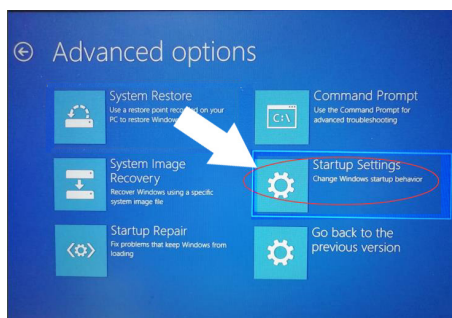


Fig. 7—Choose Startup Settings.

9. Select and click the Startup Settings, and the screen appears as follows.

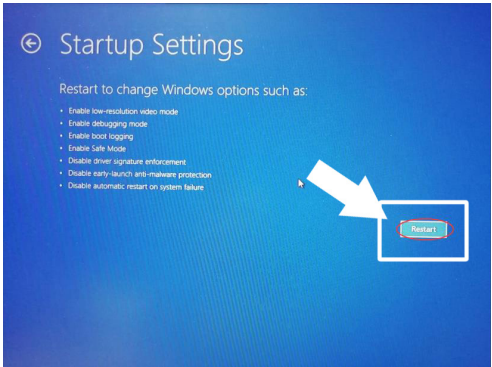


Fig. 8—Click Restart

10. Click the Restart button, and the computer restarts again. The following menu appears on the screen after the restart.

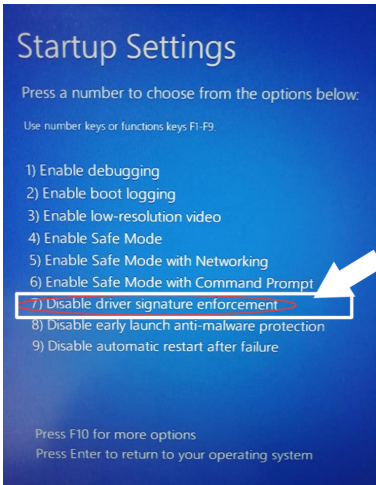


Fig. 9—Press 7 on your keyboard.

11. You can press “7” on your keyboard to choose the Disable driver signing enforcement. The computer will restart automatically. At this point, you can proceed to install the software. Refer to the document entitled *Install MPS-4 Software (WIN 10)*.

WARRANTY

WPI (World Precision Instruments) warrants to the original purchaser that this equipment, including its components and parts, shall be free from defects in material and workmanship for a period of 30 days* from the date of receipt. WPI's obligation under this warranty shall be limited to repair or replacement, at WPI's option, of the equipment or defective components or parts upon receipt thereof f.o.b. WPI, Sarasota, Florida U.S.A. Return of a repaired instrument shall be f.o.b. Sarasota.

The above warranty is contingent upon normal usage and does not cover products which have been modified without WPI's approval or which have been subjected to unusual physical or electrical stress or on which the original identification marks have been removed or altered. The above warranty will not apply if adjustment, repair or parts replacement is required because of accident, neglect, misuse, failure of electric power, air conditioning, humidity control, or causes other than normal and ordinary usage.

To the extent that any of its equipment is furnished by a manufacturer other than WPI, the foregoing warranty shall be applicable only to the extent of the warranty furnished by such other manufacturer. This warranty will not apply to appearance terms, such as knobs, handles, dials or the like.

WPI makes no warranty of any kind, express or implied or statutory, including without limitation any warranties of merchantability and/or fitness for a particular purpose. WPI shall not be liable for any damages, whether direct, indirect, special or consequential arising from a failure of this product to operate in the manner desired by the user. WPI shall not be liable for any damage to data or property that may be caused directly or indirectly by use of this product.

Claims and Returns

Inspect all shipments upon receipt. Missing cartons or obvious damage to cartons should be noted on the delivery receipt before signing. Concealed loss or damage should be reported at once to the carrier and an inspection requested. All claims for shortage or damage must be made within ten (10) days after receipt of shipment. Claims for lost shipments must be made within thirty (30) days of receipt of invoice or other notification of shipment. Please save damaged or pilfered cartons until claim is settled. In some instances, photographic documentation may be required. Some items are time-sensitive; WPI assumes no extended warranty or any liability for use beyond the date specified on the container

Do not return any goods to us without obtaining prior approval and instructions from our Returns Department. Goods returned (unauthorized) by collect freight may be refused. Goods accepted for restocking will be exchanged or credited to your WPI account. Goods returned which were ordered by customers in error are subject to a 25% restocking charge. Equipment which was built as a special order cannot be returned.

Repairs

Contact our Customer Service Department for assistance in the repair of apparatus. Do not return goods until instructions have been received. Returned items must be securely packed to prevent further damage in transit. The Customer is responsible for paying shipping expenses, including adequate insurance on all items returned for repairs. Identification of the item(s) by model number, name, as well as complete description of the difficulties experienced should be written on the repair purchase order and on a tag attached to the item.

** Electrodes, batteries and other consumable parts are warranted for 30 days only from the date on which the customer receives these items.*

USA

175 Sarasota Center Blvd., Sarasota FL 34240-9258
Tel: 941-371-1003 • Fax: 941-377-5428 • E-mail: sales@wpiinc.com

UK

1 Hunting Gate, Hitchin, Hertfordshire SG4 0TJ
Tel: 44 (0)1462 424700 • Fax: 44 (0)1462 424701 • E-mail: wpiuk@wpi-europe.com

Germany

Pfingstweide 16, D-61169 Friedberg (Hessen), Germany
Tel: +49 (0)6031 67708-0 • Fax: +49 (0)6031 67708-80 • E-mail: wpide@wpi-europe.com

China & Hong Kong

WPI Shanghai Trading Co., Ltd.
Rm 27A, Liangfeng Building, No 8, Dongfang Road, Pudong Free Trade Zone, Shanghai, PR China
Tel: +86 21 6888 5517 • E-mail: chinasales@china.wpiinc.com

Brazil

Av. Conselheiro Nébias, 756 sala 2611, Santos-CEP: 11045-002, São Paulo Brazil Tel: (013) 406-29703 • E-mail: info@brazil.wpiinc.com

Internet

www.wpiinc.com • www.wpi-europe.com • www.wpiinc.net • www.wpibrasil.com.br