



# Expanding Your Reach

## WPI's Newest Research Tools

### Muscle Physiology

1 **SI-H Basic Muscle Tester**, the basic tool for muscle research, is completely modular in design, allowing for the addition of a linear motor or laser diode.

2 **SI-H Force Transducers** come with a *lifetime guarantee*, and these durable force transducers can measure forces as small as  $0.2\mu\text{N}$ .

3 **SI-H Muscle Tester MKB** is a comprehensive instrument spanning the muscle physiology field, and it has many optional features.

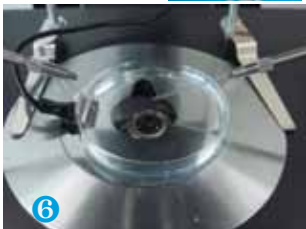
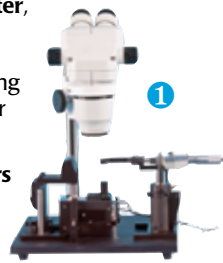
4 The **SI-H Langendorff** system is designed as a perfusion system for isolated, small mammalian hearts. The system includes the stainless steel sink, a small reeling pump and specially designed two-way Teflon taps. A Neely system is also available.

5 The **SI-H Compact Langendorff** needs no glass columns. It has both Langendorff and working heart perfusion modes.

6 The **SIH Vertical Tissue Baths** are isolated tissue bath systems developed for *in vitro* investigation on isolated smooth, cardiac or skeletal muscle preparations. The feature low volume, calibrated chambers and a lifetime warranty on force transducers.

### Biochemistry

7 Using dielectrophoresis (DEP), **CellWorks** makes cellular manipulation easy. You can easily attract and move a single cell, a group of cells or various other kinds of particles, automatically sort the viable cells and fuse cells by electroporation



1 **Mupid-One** is the new standard for electrophoresis systems. Safety, ease of use, quick cleanup and a variety of operational options make this the ideal electrophoresis system.

### Anesthesia/Ventilator

2 **CWE-SAR-830/AP** ventilator, with volume and pressure-cycled modes, is safe for tiny animals like mice and guinea pigs.

3 **CWE-MRI-1** small animal ventilator with non-magnetic, pneumatic valves is designed for use in MRIs.

4 WPI offers three **Anesthesia** systems: single animal, classic and auto-flow. Ideal for neonates and small animals (<5kg) and safe for lab workers, they feature a unique valve system to minimize isoflourane leakage. Quick induction, speedy recovery.

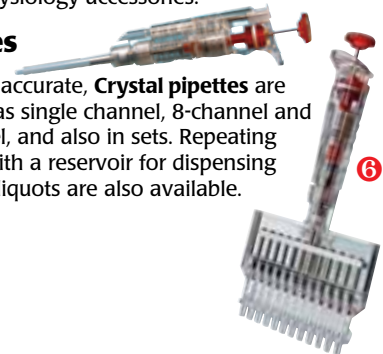


### WPI's Modular Board System

5 WPI will soon introduce a new modular design for all your favorite electronic equipment. Install up to eight units in one convenient system. Units include stimulators, isolators, amplifiers, free radical analyzers and muscle physiology accessories.

### Pipettes

6 Highly accurate, **Crystal pipettes** are available as single channel, 8-channel and 12-channel, and also in sets. Repeating pipettes with a reservoir for dispensing multiple aliquots are also available.





# Expanding Your Reach

## WPI's Newest Research Tools



### Animal Physiology

**1 Non-Invasive Blood Pressure System**, configurable for 1-24 animals, is a highly accurate system for monitoring mouse or rat blood pressure with tail cuffs.

**2 Analgesia Testing** equipment for mice and rats includes Electronic VonFrey, Plethysmometer, Randal Selitto Paw Pressure meter, Grip Strength meter, Incremental Hot/Cold Plate, Incapacitance meter, Hot Plate meter, Plantar Test Apparatus and Tail Flick Test.



### Microfluidics

**3** Designed for control of fluids in the nanoliter and microliter ranges, the **SA-MFCS** eliminates the hysteresis, long equilibrium times and pulsing problems of other pumps in the low volume ranges. It's highly accurate with a short response time (40ms) and excellent stability.



### Surgery Related Equipment

**4 MPM-7** offers portable and reliable multi-parameter monitoring of animals. Seven core parameters include ECG, heart rate, NIBP, pulse oximetry, respiration rate, apnea trends, temperatures and trace freeze simultaneously.



**5 VSP1** Medical grade syringe pump offers exceptional accuracy and stability coupled with safety features that are crucial in the animal health care environment.



### Cell & Tissue/Biosensing

**6 EVOM<sup>2</sup>** is the second generation of epithelial volt/ohm testing, redesigned for ease of use. It features a rechargeable battery, tilt bail, 4.5 digit display, analog output, testing circuit and hands-free operation.



**7 TBR1025** is a one-channel free radical analyzer with a pre-calibrated temperature input. It is designed for use with the complete line of WPI sensors, including the NO, H<sub>2</sub>S, H<sub>2</sub>O<sub>2</sub>, glucose and O<sub>2</sub>.



### Spectroscopy

**1 LWCC-INJECTION-SYS** is a unique liquid sample transport system for use with the LWCC. Together with a pump and LWCC, the injection system provides an efficient, continual flow for injecting a sample through the LWCC, and minimizes contamination and the formation of tiny bubbles that interfere with spectroscopic data recording.



**2 QFT-2** is a combination optical holder for glass fiber filters and standard cuvette holder. Rugged and portable, QFT-2 is ideal for field measurements using the quantitative filter technique or the standard cuvette.



**3 89328** adjustable cuvette holder can accommodate a 1cm, 2cm, 3cm, 4cm, 5cm or 10cm standard or cylindrical cuvette by simply removing one screw and repositioning the cuvette holder wall.



**4 89340** 4-Way standard cuvette holder can be used for both absorbance or fluorescent measurements.



### Miscellaneous

**5 Small Animal RFID Tagging** system uses the world's smallest RFID tags—only 1x6mm. It is easy to configure. Plus these RFID tags are read and writeable. Now, you can easily track an animal for its entire life!



## World Precision Instruments, Inc.

**USA:** International Trade Center, 175 Sarasota Center Boulevard, Sarasota FL 34240-9258 USA

**Tel:** 941-371-1003 • **Fax:** 941-377-5428 • **E-mail:** info@wpiinc.com • **Internet:** http://www.wpiinc.com

**UK:** Astonbury Farm Business Centre • Aston, Stevenage, Hertfordshire SG2 7EG England • Tel: 01438-880025 • Fax: 01438-880026 • E-mail: wpiuk@wpi-europe.com

**Germany:** Zossener Str. 55, 10961 Berlin, Germany • Tel: 030-6188845 • Fax: 030-6188670 • E-mail: wptide@wpi-europe.com

**China:** WPI Shanghai Trading Co., Ltd., Rm 20a No8 Dong Fang Rd., Lu Jia Zui Financial Dist., Shanghai PRC • Tel: 86 688 85517 • E-mail: chinasales@china.wpiinc.com